

For Research Use Only

# NEDD4 Recombinant Matched Antibody Pair, PBS Only



Catalog Number:MP00234-2

## Capture Antibody Information

Catalog Number:  
83112-5-PBS

Host:  
Rabbit

Isotype:  
IgG

Purification Method:  
Protein A purification

Clone ID:  
230478G3

Reactivity:  
human

Immunogen Catalog Number:  
Ag16291

Conjugate:  
Unconjugated

Full name:  
neural precursor cell expressed,  
developmentally down-regulated 4

Gene ID:  
4734

## Detection Antibody Information

Catalog Number:  
83112-2-PBS

Host:  
Rabbit

Isotype:  
IgG

Purification Method:  
Protein A purification

Clone ID:  
230478A1

Reactivity:  
human

GenBank:  
BC152452

Immunogen Catalog Number:  
Ag16291

Conjugate:  
Unconjugated

Full name:  
neural precursor cell expressed,  
developmentally down-regulated 4

Gene ID:  
4734

## Applications

Tested Applications:  
Sandwich ELISA

Range:  
0.313-20 ng/mL (Sandwich ELISA)

Recommended Dilutions:  
It is recommended that this reagent  
should be titrated in each testing  
system to obtain optimal results.

## Product Information

MP00234-2 targets NEDD4 in immunoassays as a matched antibody pair. Validated in Sandwich ELISA.

Capture antibody: NEDD4 Recombinant antibody, PBS Only (Capture) 83112-5-PBS (230478G3). 100 µg. Concentration 1 mg/ml.

Detection antibody: NEDD4 Recombinant antibody, PBS Only (Capture/Detector) 83112-2-PBS (230478A1). 100 µg. Concentration 1 mg/ml.

Alternative NEDD4 matched antibody pairs: MP00234-1

Unconjugated rabbit recombinant monoclonal antibody pair in PBS only storage buffer at a concentration of 1 mg/mL, ready for conjugation. Created using Proteintech's proprietary in-house recombinant technology. Recombinant production enables unrivalled batch-to-batch consistency, easy scale-up, and future security of supply.

Matched antibody pairs are designed for use in a variety of assays and platforms that require matched antibody pairs.

Antibody use should be optimized for each application and assay.

## Storage

Storage:  
Store at -80°C.  
Storage buffer:  
PBS only

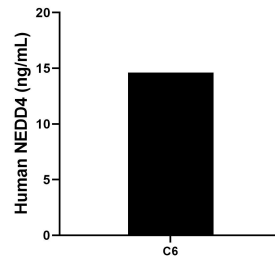
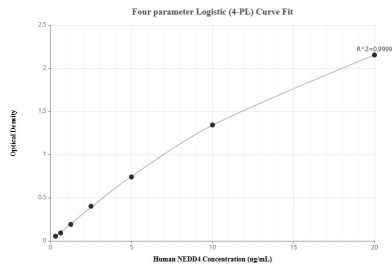
For technical support and original validation data for this product please contact:

T: 1 (888) 4PTGLAB (1-888-478-4522) (toll free  
in USA), or 1(312) 455-8498 (outside USA)

E: [proteintech@ptglab.com](mailto:proteintech@ptglab.com)  
W: [ptglab.com](http://ptglab.com)

This product is exclusively available under Proteintech Group brand and is not available to purchase from any other manufacturer.

## Selected Validation Data



Sandwich ELISA standard curve of MP00234-2, Human NEDD4 Recombinant Matched Antibody Pair - PBS only. 83112-5-PBS was coated to a plate as the capture antibody and incubated with serial dilutions of standard Ag16291. 83112-2-PBS was HRP conjugated as the detection antibody. Range: 0.313-20 ng/mL

The mean NEDD4 concentration was determined to be 14.63 ng/mL in C6 cell extract based on a 2.0 mg/mL extract load.