

For Research Use Only

PRKD1 Recombinant Matched Antibody Pair, PBS Only



Catalog Number:MP00230-3

Capture Antibody Information

Catalog Number:
83174-3-PBS

Host:
Rabbit

Isotype:
IgG

Purification Method:
Protein A purification

Clone ID:
230355E5

Reactivity:
Human

Conjugate:
Unconjugated

Full name:
protein kinase D1

Gene ID:
5587

Detection Antibody Information

Catalog Number:
83174-4-PBS

Host:
Rabbit

Isotype:
IgG

Purification Method:
Protein A purification

Clone ID:
230355H3

Reactivity:
Human

GenBank:
NM_002742

Conjugate:
Unconjugated

Full name:
protein kinase D1

Gene ID:
5587

Applications

Tested Applications:
Cytometric bead array

Range:
0.156-10 ng/mL (Cytometric Bead Array)

Recommended Dilutions:
It is recommended that this reagent should be titrated in each testing system to obtain optimal results.

Product Information

MP00230-3 targets PRKD1 in immunoassays as a matched antibody pair. Validated in Cytometric bead array.

Capture antibody: PRKD1 Recombinant antibody, PBS Only (Capture) 83174-3-PBS (230355E5). 100 µg. Concentration 1 mg/ml.

Detection antibody: PRKD1 Recombinant antibody, PBS Only (Capture/Detector) 83174-4-PBS (230355H3). 100 µg. Concentration 1 mg/ml.

Alternative PRKD1 matched antibody pairs: MP00230-1, MP00230-2

Unconjugated rabbit recombinant monoclonal antibody pair in PBS only (BSA and azide free) storage buffer at a concentration of 1 mg/mL, ready for conjugation. Created using Proteintech's proprietary in-house recombinant technology. Recombinant production enables unrivalled batch-to-batch consistency, easy scale-up, and future security of supply.

Matched antibody pairs are designed for use in a variety of assays and platforms that require matched antibody pairs.

Antibody use should be optimized for each application and assay.

Storage

Storage:
Store at -80°C.
Storage buffer:
PBS only

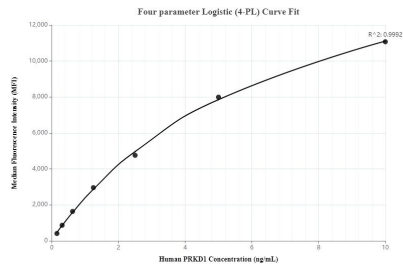
For technical support and original validation data for this product please contact:

T: 1 (888) 4PTGLAB (1-888-478-4522) (toll free in USA), or 1(312) 455-8498 (outside USA)

E: proteintech@ptglab.com
W: ptglab.com

This product is exclusively available under Proteintech Group brand and is not available to purchase from any other manufacturer.

Selected Validation Data



Cytometric bead array standard curve of MP00230-3, PRKD1 Recombinant Matched Antibody Pair, PBS Only. Capture antibody: 83174-3-PBS. Detection antibody: 83174-4-PBS. Standard: SY00930. Range: 0.156-10 ng/mL