

For Research Use Only

SMOC2 Recombinant Matched Antibody Pair, PBS Only



Catalog Number:MP00228-1

Capture Antibody Information

Catalog Number:
83268-3-PBS
Host:
Rabbit
Isotype:
IgG
Purification Method:
Protein A purification

Clone ID:
240107G1
Reactivity:
human
Immunogen Catalog Number:
Ag34966

Conjugate:
Unconjugated
Full name:
SPARC related modular calcium binding 2
Gene ID:
64094
Affinity:
 $K_D = 1.99 \times 10^{-9}M$
 $K_{Off} = 1.97 \times 10^{-4}M$
 $K_{On} = 9.90 \times 10^4M$

Detection Antibody Information

Catalog Number:
83268-1-PBS
Host:
Rabbit
Isotype:
IgG
Purification Method:
Protein A purification

Clone ID:
240107E9
Reactivity:
human
GenBank:
BC047583
Immunogen Catalog Number:
Ag34966

Conjugate:
Unconjugated
Full name:
SPARC related modular calcium binding 2
Gene ID:
64094
Affinity:
 $K_D = 2.22 \times 10^{-9}M$
 $K_{Off} = 1.68 \times 10^{-4}M$
 $K_{On} = 7.58 \times 10^4M$

Applications

Tested Applications:
Cytometric bead array, Sandwich ELISA

Range:
1.25-40 ng/mL (Cytometric Bead Array)
62.5-4000 pg/mL (Sandwich ELISA)

Recommended Dilutions:
It is recommended that this reagent should be titrated in each testing system to obtain optimal results.

Product Information

MP00228-1 targets SMOC2 in immunoassays as a matched antibody pair. Validated in Cytometric bead array, Sandwich ELISA.

Capture antibody: SMOC2 Recombinant antibody, PBS Only (Capture) 83268-3-PBS (240107G1). 100 µg. Concentration 1 mg/ml.

Detection antibody: SMOC2 Recombinant antibody, PBS Only (Detector) 83268-1-PBS (240107E9). 100 µg. Concentration 1 mg/ml.

Alternative SMOC2 matched antibody pairs: MP00228-2

Unconjugated rabbit recombinant monoclonal antibody pair in PBS only storage buffer at a concentration of 1 mg/mL, ready for conjugation. Created using Proteintech's proprietary in-house recombinant technology. Recombinant production enables unrivalled batch-to-batch consistency, easy scale-up, and future security of supply.

Matched antibody pairs are designed for use in a variety of assays and platforms that require matched antibody pairs.

Antibody use should be optimized for each application and assay.

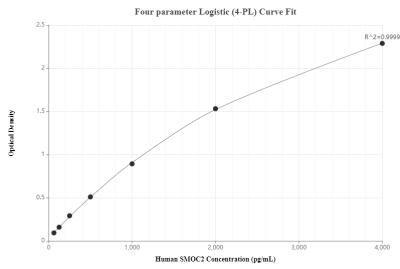
Storage

Storage:
Store at -80°C.
Storage buffer:
PBS only

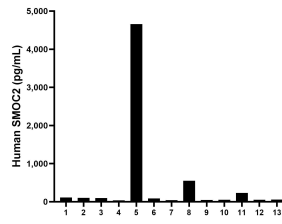
For technical support and original validation data for this product please contact:
T: 1 (888) 4PTGLAB (1-888-478-4522) (toll free in USA), or 1(312) 455-8498 (outside USA) E: proteintech@ptglab.com W: ptglab.com

This product is exclusively available under Proteintech Group brand and is not available to purchase from any other manufacturer.

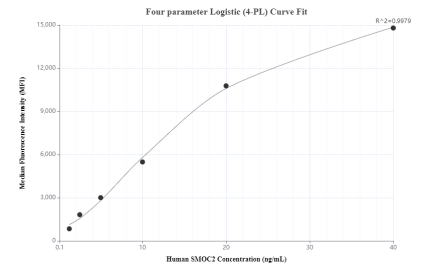
Selected Validation Data



Sandwich ELISA standard curve of MP00228-1 Human SMOC2 Monoclonal Matched Antibody Pair - PBS only. 83268-3-PBS was coated to a plate as the capture antibody and incubated with serial dilutions of standard Ag34966. 83268-1-PBS was HRP conjugated as the detection antibody. Range: 62.5-4000 pg/mL



Serum of thirteen individual healthy human donors was measured. The human SMOC2 concentration of detected samples was determined to be 471.5 pg/mL with a range of 39.6-4,658.9 pg/mL



Cytometric bead array standard curve of MP00228-1, SMOC2 Recombinant Matched Antibody Pair, PBS Only. Capture antibody: 83268-3-PBS. Detection antibody: 83268-1-PBS. Standard: Ag34966. Range: 1.25-40 ng/mL