

For Research Use Only

# SLC16A11 Recombinant Matched Antibody Pair, PBS Only



Catalog Number:MP00223-3

## Capture Antibody Information

Catalog Number:  
83239-4-PBS

Host:  
Rabbit

Isotype:  
IgG

Purification Method:  
Protein A purification

Clone ID:  
240081H8

Reactivity:  
Human

Immunogen Catalog Number:  
Ag24920

Conjugate:  
Unconjugated

Full name:  
solute carrier family 16, member 11  
(monocarboxylic acid transporter 11)

Gene ID:  
162515

## Detection Antibody Information

Catalog Number:  
83239-2-PBS

Host:  
Rabbit

Isotype:  
IgG

Purification Method:  
Protein A purification

Clone ID:  
240081G10

Reactivity:  
Human

GenBank:  
BC093860

Immunogen Catalog Number:  
Ag24920

Conjugate:  
Unconjugated

Full name:  
solute carrier family 16, member 11  
(monocarboxylic acid transporter 11)

Gene ID:  
162515

## Applications

Tested Applications:  
Cytometric bead array

Range:  
1.25-20 ng/mL (Cytometric Bead Array)

Recommended Dilutions:  
It is recommended that this reagent should be titrated in each testing system to obtain optimal results.

## Product Information

MP00223-3 targets SLC16A11 in immunoassays as a matched antibody pair. Validated in Cytometric bead array.

Capture antibody: SLC16A11 Recombinant antibody, PBS Only (Capture) 83239-4-PBS (240081H8). 100 µg. Concentration 1 mg/ml.

Detection antibody: SLC16A11 Recombinant antibody, PBS Only (Detector) 83239-2-PBS (240081G10). 100 µg. Concentration 1 mg/ml.

Alternative SLC16A11 matched antibody pairs: MP00223-1, MP00223-2

Unconjugated rabbit recombinant monoclonal antibody pair in PBS only (BSA and azide free) storage buffer at a concentration of 1 mg/mL, ready for conjugation. Created using Proteintech's proprietary in-house recombinant technology. Recombinant production enables unrivalled batch-to-batch consistency, easy scale-up, and future security of supply.

Matched antibody pairs are designed for use in a variety of assays and platforms that require matched antibody pairs.

Antibody use should be optimized for each application and assay.

## Storage

Storage:  
Store at -80°C.  
Storage buffer:  
PBS only

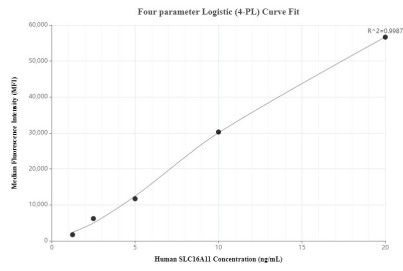
For technical support and original validation data for this product please contact:

T: 1 (888) 4PTGLAB (1-888-478-4522) (toll free in USA), or 1(312) 455-8498 (outside USA)

E: [proteintech@ptglab.com](mailto:proteintech@ptglab.com)  
W: [ptglab.com](http://ptglab.com)

This product is exclusively available under Proteintech Group brand and is not available to purchase from any other manufacturer.

## Selected Validation Data



Cytometric bead array standard curve of MP00223-3, SLC16A11 Recombinant Matched Antibody Pair, PBS Only. Capture antibody: 83239-4-PBS. Detection antibody: 83239-2-PBS. Standard: Ag24920. Range: 1.25-20 ng/mL.