

For Research Use Only

# E-cadherin Recombinant Matched Antibody Pair, PBS Only



Catalog Number:MP00187-7

## Capture Antibody Information

**Catalog Number:**  
83991-6-PBS  
**Host:**  
Rabbit  
**Isotype:**  
IgG  
**Purification Method:**  
Protein A purification

**Clone ID:**  
241098D7  
**Reactivity:**  
human

**Conjugate:**  
Unconjugated  
**Full name:**  
cadherin 1, type 1, E-cadherin (epithelial)  
**Gene ID:**  
999

## Detection Antibody Information

**Catalog Number:**  
83991-5-PBS  
**Host:**  
Rabbit  
**Isotype:**  
IgG  
**Purification Method:**  
Protein A purification

**Clone ID:**  
241098A7  
**Reactivity:**  
human  
**GenBank:**  
NM\_004360.5

**Conjugate:**  
Unconjugated  
**Full name:**  
cadherin 1, type 1, E-cadherin (epithelial)  
**Gene ID:**  
999

## Applications

**Tested Applications:**  
Sandwich ELISA

**Range:**  
0.156-10 ng/mL (Sandwich ELISA)

**Recommended Dilutions:**  
It is recommended that this reagent should be titrated in each testing system to obtain optimal results.

## Product Information

MP00187-7 targets E-cadherin in immunoassays as a matched antibody pair. Validated in Sandwich ELISA.

Capture antibody: E-cadherin Recombinant antibody, PBS Only (Capture) 83991-6-PBS (241098D7). 100 µg. Concentration 1 mg/ml.

Detection antibody: E-cadherin Recombinant antibody, PBS Only (Detector) 83991-5-PBS (241098A7). 100 µg. Concentration 1 mg/ml.

Unconjugated rabbit recombinant monoclonal antibody pair in PBS only storage buffer at a concentration of 1 mg/mL, ready for conjugation. Created using Proteintech's proprietary in-house recombinant technology. Recombinant production enables unrivalled batch-to-batch consistency, easy scale-up, and future security of supply.

Matched antibody pairs are designed for use in a variety of assays and platforms that require matched antibody pairs.

Antibody use should be optimized for each application and assay.

## Storage

**Storage:**  
Store at -80°C.  
**Storage buffer:**  
PBS only

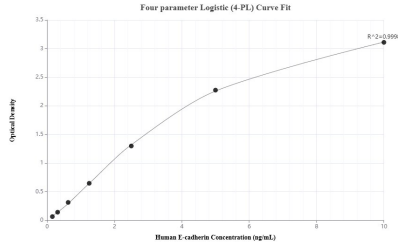
For technical support and original validation data for this product please contact:

T: 1 (888) 4PTGLAB (1-888-478-4522) (toll free in USA), or 1(312) 455-8498 (outside USA)

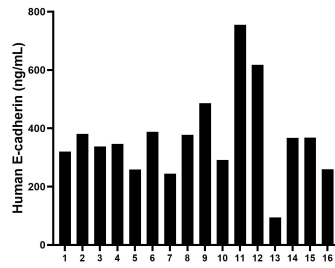
E: [proteintech@ptglab.com](mailto:proteintech@ptglab.com)  
W: [ptglab.com](http://ptglab.com)

**This product is exclusively available under Proteintech Group brand and is not available to purchase from any other manufacturer.**

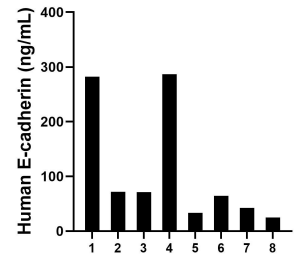
## Selected Validation Data



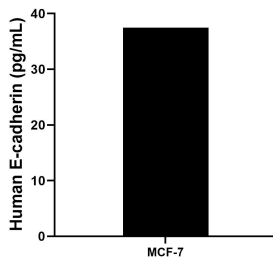
Sandwich ELISA standard curve of MP00187-7, Human E-cadherin Recombinant Matched Antibody Pair - PBS only. 83991-6-PBS was coated to a plate as the capture antibody and incubated with serial dilutions of standard Eg1112. 83991-5-PBS was HRP conjugated as the detection antibody. Range: 0.156-10 ng/mL



Serum of sixteen individual healthy human donors was measured. The human E-cadherin concentration of detected samples was determined to be 368.32 ng/mL with a range of 94.16 - 755.34 ng/mL



Urine of eight individual healthy human donors was measured. The human E-cadherin concentration of detected samples was determined to be 109.49 ng/mL with a range of 24.87 - 286.93 ng/mL



MCF-7 human breast cancer cells ( $5 \times 10^6$  cells/mL) were cultured in DMEM and 10% fetal bovine serum, 4 mM L-glutamine, 4500 mg/L glucose, 100 U/mL penicillin, and 100 µg/mL streptomycin sulfate. An aliquot of the cell culture supernate was removed, assayed for human E-cadherin, and measured 37.5 pg/mL