

For Research Use Only



Mouse CD126/IL-6R alpha Recombinant Matched Antibody Pair, PBS Only

Catalog Number: MP00182-2

Capture Antibody Information

Catalog Number:
98024-1-PBS
Host:
Rabbit
Isotype:
IgG
Purification Method:
Protein A purification

Clone ID:
230371A7
Reactivity:
mouse

Conjugate:
Unconjugated
Full name:
interleukin 6 receptor, alpha
Gene ID:
16194

Detection Antibody Information

Catalog Number:
83209-2-PBS
Host:
Rabbit
Isotype:
IgG
Purification Method:
Protein A purification

Clone ID:
230371E7
Reactivity:
mouse
GenBank:
NM_010559.3

Conjugate:
Unconjugated
Full name:
interleukin 6 receptor, alpha
Gene ID:
16194

Applications

Tested Applications:
Sandwich ELISA

Range:
62.5-4000 pg/mL (Sandwich ELISA)

Recommended Dilutions:
It is recommended that this reagent should be titrated in each testing system to obtain optimal results.

Product Information

MP00182-2 targets CD126/IL-6R alpha in immunoassays as a matched antibody pair. Validated in Sandwich ELISA.
Capture antibody: Anti-Mouse CD126/IL-6R alpha Rabbit Recombinant Antibody, PBS Only 98024-1-PBS (230371A7). 100 µg. Concentration 1 mg/ml.
Detection antibody: Mouse IL6ra Recombinant antibody, PBS Only (Capture/Detector) 83209-2-PBS (230371E7). 100 µg. Concentration 1 mg/ml.
Alternative CD126/IL-6R alpha matched antibody pairs: MP00676-1, MP00676-2, MP50060-1
Unconjugated rabbit recombinant monoclonal antibody pair in PBS only storage buffer at a concentration of 1 mg/mL, ready for conjugation. Created using Proteintech's proprietary in-house recombinant technology. Recombinant production enables unrivalled batch-to-batch consistency, easy scale-up, and future security of supply.
Matched antibody pairs are designed for use in a variety of assays and platforms that require matched antibody pairs.
Antibody use should be optimized for each application and assay.

Storage

Storage:
Store at -80°C.
Storage buffer:
PBS only

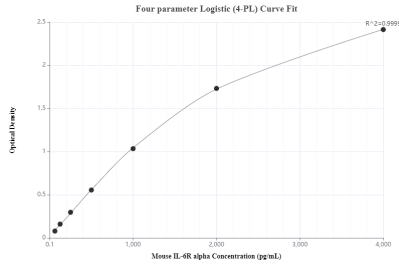
For technical support and original validation data for this product please contact:

T: 1 (888) 4PTGLAB (1-888-478-4522) (toll free in USA), or 1(312) 455-8498 (outside USA)

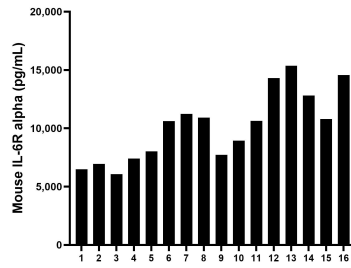
E: proteintech@ptglab.com
W: ptglab.com

This product is exclusively available under Proteintech Group brand and is not available to purchase from any other manufacturer.

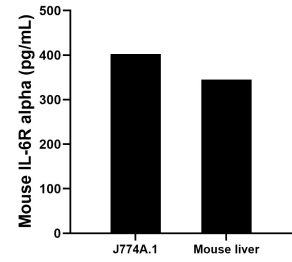
Selected Validation Data



Sandwich ELISA standard curve of MP00182-2, Mouse CD126/IL-6R alpha Monoclonal Matched Antibody Pair - PBS only. 98024-1-PBS was coated to a plate as the capture antibody and incubated with serial dilutions of standard Eg0664. 83209-2-PBS was HRP conjugated as the detection antibody. Range: 62.5-4000 pg/mL.



Serum of sixteen mice were measured. The IL-6R alpha concentration of detected samples was determined to be 10,180.3 pg/mL with a range of 6,065.2-15,362.2 pg/mL.



J774A.1 mouse reticulum cell sarcoma macrophage cells (1×10^6 cells/mL) were cultured for 3 days in DMEM containing 10% fetal bovine serum. An aliquot of the cell culture supernatants were removed, assayed for mouse IL-6R alpha, and measured 402.5 pg/mL. Liver tissue from one mouse was homogenized and seeded into 100 mL of RPMI containing 10% fetal bovine serum, 2 mM L-glutamine, 100 U/mL penicillin, 100 μ g/mL streptomycin sulfate, and 50 μ M β -

