

For Research Use Only

MAX Recombinant Matched Antibody Pair, PBS Only



Catalog Number:MP00126-3

Capture Antibody Information

Catalog Number:
82958-5-PBS

Host:
Rabbit

Isotype:
IgG

Purification Method:
Protein A purification

Clone ID:
230215G4

Reactivity:
Human

Immunogen Catalog Number:
Ag0680

Conjugate:
Unconjugated

Full name:
MYC associated factor X

Gene ID:
4149

Detection Antibody Information

Catalog Number:
82958-3-PBS

Host:
Rabbit

Isotype:
IgG

Purification Method:
Protein A purification

Clone ID:
230215C6

Reactivity:
Human

GenBank:
BC003525

Immunogen Catalog Number:
Ag0680

Conjugate:
Unconjugated

Full name:
MYC associated factor X

Gene ID:
4149

Affinity:
 $K_D = 2.32 \times 10^{-10}M$
 $K_{Off} = 8.10 \times 10^{-5}M$
 $K_{On} = 3.49 \times 10^5M$

Applications

Tested Applications:
Cytometric bead array

Range:
0.625-20 ng/mL (Cytometric Bead Array)

Recommended Dilutions:
It is recommended that this reagent should be titrated in each testing system to obtain optimal results.

Product Information

MP00126-3 targets MAX in immunoassays as a matched antibody pair. Validated in Cytometric bead array.

Capture antibody: MAX Recombinant antibody, PBS Only (Capture) 82958-5-PBS (230215G4). 100 µg. Concentration 1 mg/ml.

Detection antibody: MAX Recombinant antibody, PBS Only (Detector) 82958-3-PBS (230215C6). 100 µg. Concentration 1 mg/ml.

Alternative MAX matched antibody pairs: MP00126-1, MP00126-2

Unconjugated rabbit recombinant monoclonal antibody pair in PBS only storage buffer at a concentration of 1 mg/mL, ready for conjugation. Created using Proteintech's proprietary in-house recombinant technology. Recombinant production enables unrivalled batch-to-batch consistency, easy scale-up, and future security of supply.

Matched antibody pairs are designed for use in a variety of assays and platforms that require matched antibody pairs.

Antibody use should be optimized for each application and assay.

Storage

Storage:
Store at -80°C.
Storage buffer:
PBS only

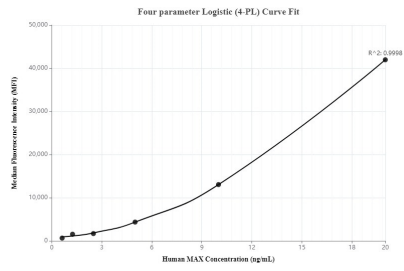
For technical support and original validation data for this product please contact:

T: 1 (888) 4PTGLAB (1-888-478-4522) (toll free in USA), or 1(312) 455-8498 (outside USA)

E: proteintech@ptglab.com
W: ptglab.com

This product is exclusively available under Proteintech Group brand and is not available to purchase from any other manufacturer.

Selected Validation Data



Cytometric bead array standard curve of MP00126-3, MAX Recombinant Matched Antibody Pair - PBS only. Capture antibody: 82958-5-PBS. Detection antibody: 82958-3-PBS. Standard: Ag0680. Range: 0.625-20 ng/mL