

For Research Use Only



ABCA3 Recombinant Matched Antibody Pair, PBS Only

Catalog Number:MP00121-3

Capture Antibody Information

Catalog Number:
83018-5-PBS
Host:
Rabbit
Isotype:
IgG
Purification Method:
Protein A purification

Clone ID:
230194A9
Reactivity:
human
Immunogen Catalog Number:
Ag24749

Conjugate:
Unconjugated
Full name:
ATP-binding cassette, sub-family A (ABC1), member 3
Gene ID:
21

Detection Antibody Information

Catalog Number:
83018-4-PBS
Host:
Rabbit
Isotype:
IgG
Purification Method:
Protein A purification

Clone ID:
230194C6
Reactivity:
human
GenBank:
BC140895
Immunogen Catalog Number:
Ag24749

Conjugate:
Unconjugated
Full name:
ATP-binding cassette, sub-family A (ABC1), member 3
Gene ID:
21

Applications

Tested Applications:
Sandwich ELISA

Range:
0.156-10 ng/mL (Sandwich ELISA)

Recommended Dilutions:
It is recommended that this reagent should be titrated in each testing system to obtain optimal results.

Product Information

MP00121-3 targets ABCA3 in immunoassays as a matched antibody pair. Validated in Sandwich ELISA.

Capture antibody: ABCA3 Recombinant antibody, PBS Only (Capture) 83018-5-PBS (230194A9). 100 µg. Concentration 1 mg/ml.

Detection antibody: ABCA3 Recombinant antibody, PBS Only (Detector) 83018-4-PBS (230194C6). 100 µg. Concentration 1 mg/ml.

Alternative ABCA3 matched antibody pairs: MP00121-1, MP00121-2

Unconjugated rabbit recombinant monoclonal antibody pair in PBS only storage buffer at a concentration of 1 mg/mL, ready for conjugation. Created using Proteintech's proprietary in-house recombinant technology. Recombinant production enables unrivalled batch-to-batch consistency, easy scale-up, and future security of supply.

Matched antibody pairs are designed for use in a variety of assays and platforms that require matched antibody pairs.

Antibody use should be optimized for each application and assay.

Storage

Storage:
Store at -80°C.
Storage buffer:
PBS only

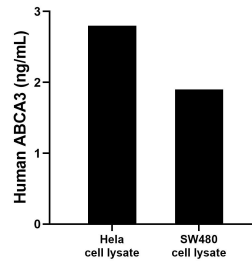
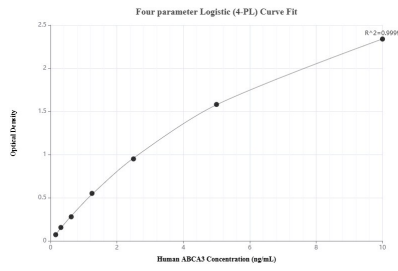
For technical support and original validation data for this product please contact:

T: 1 (888) 4PTGLAB (1-888-478-4522) (toll free in USA), or 1(312) 455-8498 (outside USA)

E: proteintech@ptglab.com
W: ptglab.com

This product is exclusively available under Proteintech Group brand and is not available to purchase from any other manufacturer.

Selected Validation Data



Sandwich ELISA standard curve of MP00121-3, Human ABCA3 Recombinant Matched Antibody Pair - PBS only. 83018-5-PBS was coated to a plate as the capture antibody and incubated with serial dilutions of standard Ag24749. 83018-4-PBS was HRP conjugated as the detection antibody. Range: 0.156-10 ng/mL

HeLa and SW480 cell lysates were measured. The human ABCA3 concentration of detected samples was determined to be 2.8 ng/mL (based on a 2.1 mg/mL extract load) in HeLa cell lysate and 1.9 ng/mL (based on a 2.3 mg/mL extract load) in SW480 cell lysate.