

For Research Use Only

# Mouse KIM-1/HAVCR1 Recombinant Matched Antibody Pair, PBS Only



Catalog Number:MP00116-3

## Capture Antibody Information

Catalog Number:  
83064-4-PBS

Host:  
Rabbit

Isotype:  
IgG

Purification Method:  
Protein A purification

Clone ID:  
230336D12

Reactivity:  
mouse

Conjugate:  
Unconjugated

Full name:  
hepatitis A virus cellular receptor 1

Gene ID:  
171283

## Detection Antibody Information

Catalog Number:  
83064-5-PBS

Host:  
Rabbit

Isotype:  
IgG

Purification Method:  
Protein A purification

Clone ID:  
230336G12

Reactivity:  
mouse

GenBank:  
NM\_134248

Conjugate:  
Unconjugated

Full name:  
hepatitis A virus cellular receptor 1

Gene ID:  
171283

## Applications

Tested Applications:  
Cytometric bead array, Sandwich ELISA

Range:  
0.625-10 ng/mL (Cytometric Bead Array)  
7.8-500 pg/mL (Sandwich ELISA)

Recommended Dilutions:  
It is recommended that this reagent should be titrated in each testing system to obtain optimal results.

## Product Information

MP00116-3 targets KIM-1/HAVCR1 in immunoassays as a matched antibody pair. Validated in Cytometric bead array, Sandwich ELISA.

Capture antibody: Mouse KIM-1/HAVCR1 Recombinant antibody, PBS Only (Capture) 83064-4-PBS (230336D12). 100 µg. Concentration 1 mg/ml.

Detection antibody: Mouse KIM-1/HAVCR1 Recombinant antibody, PBS Only (Detector) 83064-5-PBS (230336G12). 100 µg. Concentration 1 mg/ml.

Alternative KIM-1/HAVCR1 matched antibody pairs: MP00116-1, MP00116-2, MP00213-1, MP00213-2, MP00213-3

Unconjugated rabbit recombinant monoclonal antibody pair in PBS only storage buffer at a concentration of 1 mg/mL, ready for conjugation. Created using Proteintech's proprietary in-house recombinant technology. Recombinant production enables unrivalled batch-to-batch consistency, easy scale-up, and future security of supply.

Matched antibody pairs are designed for use in a variety of assays and platforms that require matched antibody pairs.

Antibody use should be optimized for each application and assay.

## Storage

Storage:  
Store at -80°C.  
Storage buffer:  
PBS only

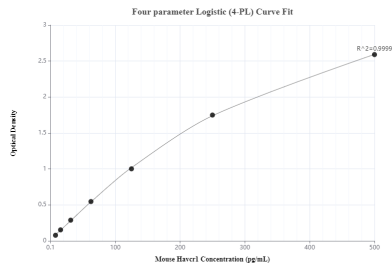
For technical support and original validation data for this product please contact:

T: 1 (888) 4PTGLAB (1-888-478-4522) (toll free in USA), or 1(312) 455-8498 (outside USA)

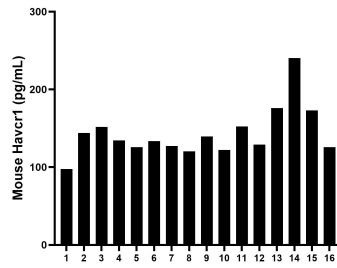
E: [proteintech@ptglab.com](mailto:proteintech@ptglab.com)  
W: [ptglab.com](http://ptglab.com)

This product is exclusively available under Proteintech Group brand and is not available to purchase from any other manufacturer.

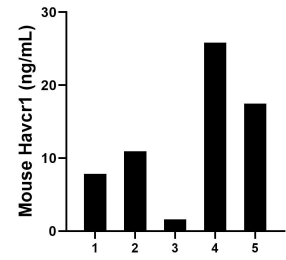
## Selected Validation Data



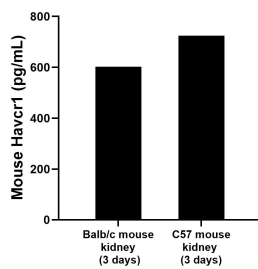
Sandwich ELISA standard curve of MP00116-3, Mouse KIM-1/HAVCR1 Recombinant Matched Antibody Pair - PBS only. 83064-4-PBS was coated to a plate as the capture antibody and incubated with serial dilutions of standard Eg0571. 83064-5-PBS. was HRP conjugated as the detection antibody. Range: 0.625-10 ng/mL



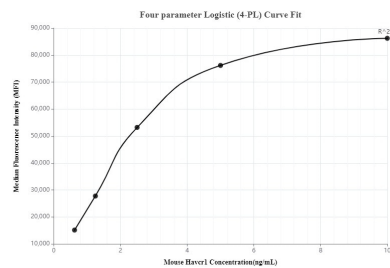
Serum of sixteen mice was measured. The Havcr1 concentration of detected samples was determined to be 143.31 pg/mL with a range of 97.69-240.45 pg/mL



Urine of five mice was measured. The Havcr1 concentration of detected samples was determined to be 12.73 ng/mL with a range of 1.61-25.85 ng/mL



Kidneys from mice were removed, rinsed in 1X PBS, and kept on ice in 1X PBS. Kidneys were then homogenized using a tissue homogenizer and seeded into media containing RPMI-1640 supplemented with 10% fetal bovine serum, 2 mM L-glutamine, 100 U/mL penicillin, and 100 mg/mL streptomycin sulfate. Cells were cultured for the times indicated. The mean Havcr1 concentration was determined to be 602.5 pg/mL in Balb/c mouse kidney, 724.5 pg/mL



Cytometric bead array standard curve of MP00116-3, Mouse KIM-1/HAVCR1 Recombinant Matched Antibody Pair, PBS Only. Capture antibody: 83064-4-PBS. Detection antibody: 83064-5-PBS. Standard: Eg0571. Range: 0.625-10 ng/mL