

For Research Use Only

# NSUN2 Recombinant Matched Antibody Pair, PBS Only



Catalog Number:MP00112-3

## Capture Antibody Information

**Catalog Number:**  
82894-9-PBS  
**Host:**  
Rabbit  
**Isotype:**  
IgG  
**Purification Method:**  
Protein A purification

**Clone ID:**  
230186D9  
**Reactivity:**  
human  
**Immunogen Catalog Number:**  
Ag14791

**Conjugate:**  
Unconjugated  
**Full name:**  
NOL1/NOP2/Sun domain family, member 2  
**Gene ID:**  
54888

## Detection Antibody Information

**Catalog Number:**  
82894-1-PBS  
**Host:**  
Rabbit  
**Isotype:**  
IgG  
**Purification Method:**  
Protein A purification

**Clone ID:**  
230186A6  
**Reactivity:**  
human  
**GenBank:**  
BC001041  
**Immunogen Catalog Number:**  
Ag14791

**Conjugate:**  
Unconjugated  
**Full name:**  
NOL1/NOP2/Sun domain family, member 2  
**Gene ID:**  
54888

## Applications

**Tested Applications:**  
Sandwich ELISA

**Range:**  
78.1-5000 pg/ml (Sandwich ELISA)

**Recommended Dilutions:**  
It is recommended that this reagent should be titrated in each testing system to obtain optimal results.

## Product Information

MP00112-3 targets NSUN2 in immunoassays as a matched antibody pair. Validated in Sandwich ELISA.

Capture antibody: NSUN2 Recombinant antibody, PBS Only (Capture) 82894-9-PBS (230186D9). 100 µg. Concentration 1 mg/ml.

Detection antibody: NSUN2 Recombinant antibody, PBS Only (Detector) 82894-1-PBS (230186A6). 100 µg. Concentration 1 mg/ml.

Alternative NSUN2 matched antibody pairs: MP00112-1, MP00112-2

Unconjugated rabbit recombinant monoclonal antibody pair in PBS only storage buffer at a concentration of 1 mg/mL, ready for conjugation. Created using Proteintech's proprietary in-house recombinant technology. Recombinant production enables unrivalled batch-to-batch consistency, easy scale-up, and future security of supply.

Matched antibody pairs are designed for use in a variety of assays and platforms that require matched antibody pairs.

Antibody use should be optimized for each application and assay.

## Storage

**Storage:**  
Store at -80°C.  
**Storage buffer:**  
PBS only

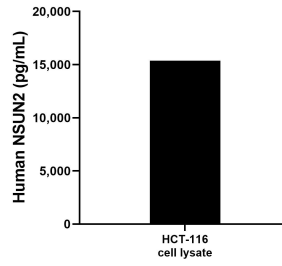
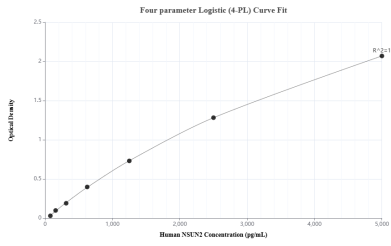
For technical support and original validation data for this product please contact:

T: 1 (888) 4PTGLAB (1-888-478-4522) (toll free in USA), or 1(312) 455-8498 (outside USA)

E: [proteintech@ptglab.com](mailto:proteintech@ptglab.com)  
W: [ptglab.com](http://ptglab.com)

**This product is exclusively available under Proteintech Group brand and is not available to purchase from any other manufacturer.**

## Selected Validation Data



Sandwich ELISA standard curve of MP00112-3, Human NSUN2 Recombinant Matched Antibody Pair - PBS only. 82894-9-PBS was coated to a plate as the capture antibody and incubated with serial dilutions of standard Ag14791. 82894-1-PBS was HRP conjugated as the detection antibody. Range: 78.1-5000 pg/ml

HCT-116 cell lysate was measured. The human NSUN2 concentration of detected samples was determined to be 15,374.1 pg/mL (based on a 3.0 mg/mL extract load).