

For Research Use Only

BMPR1B Recombinant Matched Antibody Pair, PBS Only



Catalog Number:MP00108-4

Capture Antibody Information

Catalog Number:
83029-4-PBS
Host:
Rabbit
Isotype:
IgG
Purification Method:
Protein A purification

Clone ID:
230244E12
Reactivity:
human
Immunogen Catalog Number:
Ag24902

Conjugate:
Unconjugated
Full name:
bone morphogenetic protein receptor, type IB
Gene ID:
658

Detection Antibody Information

Catalog Number:
83029-8-PBS
Host:
Rabbit
Isotype:
IgG
Purification Method:
Protein A purification

Clone ID:
230244A4
Reactivity:
human
GenBank:
BC047773
Immunogen Catalog Number:
Ag24902

Conjugate:
Unconjugated
Full name:
bone morphogenetic protein receptor, type IB
Gene ID:
658

Applications

Tested Applications:
Sandwich ELISA

Range:
0.156-10 ng/mL (Sandwich ELISA)

Recommended Dilutions:
It is recommended that this reagent should be titrated in each testing system to obtain optimal results.

Product Information

MP00108-4 targets BMPR1B in immunoassays as a matched antibody pair. Validated in Sandwich ELISA.

Capture antibody: BMPR1B Recombinant antibody, PBS Only (Capture/Detector) 83029-4-PBS (230244E12). 100 µg. Concentration 1 mg/ml.

Detection antibody: BMPR1B Recombinant antibody, PBS Only (Detector) 83029-8-PBS (230244A4). 100 µg. Concentration 1 mg/ml.

Alternative BMPR1B matched antibody pairs: MP00108-1, MP00108-2, MP00108-3

Unconjugated rabbit recombinant monoclonal antibody pair in PBS only storage buffer at a concentration of 1 mg/mL, ready for conjugation. Created using Proteintech's proprietary in-house recombinant technology. Recombinant production enables unrivalled batch-to-batch consistency, easy scale-up, and future security of supply.

Matched antibody pairs are designed for use in a variety of assays and platforms that require matched antibody pairs.

Antibody use should be optimized for each application and assay.

Storage

Storage:
Store at -80°C.
Storage buffer:
PBS only

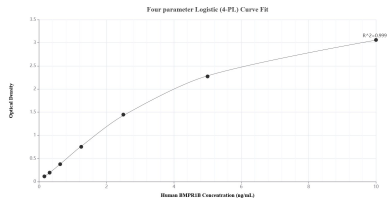
For technical support and original validation data for this product please contact:

T: 1 (888) 4PTGLAB (1-888-478-4522) (toll free in USA), or 1(312) 455-8498 (outside USA)

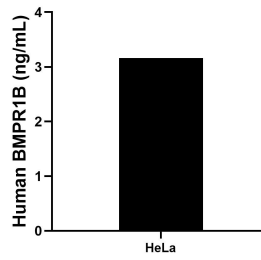
E: proteintech@ptglab.com
W: ptglab.com

This product is exclusively available under Proteintech Group brand and is not available to purchase from any other manufacturer.

Selected Validation Data



Sandwich ELISA standard curve of MP00108-4, Human BMPR1B Recombinant Matched Antibody Pair - PBS only. 83029-4-PBS was coated to a plate as the capture antibody and incubated with serial dilutions of standard Ag24902. 83029-8-PBS was HRP conjugated as the detection antibody. Range: 0.156-10 ng/mL.



The mean BMPR1B concentration was determined to be 3.16 ng/mL in HeLa cell extract based on a 1.50 mg/mL extract load.