

For Research Use Only

Cleaved Caspase 3/P17/P19 Recombinant Matched Antibody Pair, PBS Only



Catalog Number:MP00104-4

Capture Antibody Information

Catalog Number:
84912-2-PBS
Host:
Rabbit
Isotype:
IgG
Purification Method:
Protein A purification

Clone ID:
241972D11
Reactivity:
human

Conjugate:
Unconjugated
Full name:
caspase 3, apoptosis-related cysteine
peptidase
Gene ID:
836

Detection Antibody Information

Catalog Number:
84912-1-PBS
Host:
Rabbit
Isotype:
IgG
Purification Method:
Protein A purification

Clone ID:
241972C6
Reactivity:
human
GenBank:
BC016926

Conjugate:
Unconjugated
Full name:
caspase 3, apoptosis-related cysteine
peptidase
Gene ID:
836

Applications

Tested Applications:
Sandwich ELISA

Range:
0.625-40 ng/mL (Sandwich ELISA)

Recommended Dilutions:
It is recommended that this reagent
should be titrated in each testing
system to obtain optimal results.

Product Information

MP00104-4 targets Cleaved Caspase 3/P17/P19 in immunoassays as a matched antibody pair. Validated in Sandwich ELISA.

Capture antibody: Cleaved Caspase 3/P17/P19 Recombinant antibody, PBS Only (Capture) 84912-2-PBS (241972D11). 100 µg. Concentration 1 mg/ml.

Detection antibody: Cleaved Caspase 3/P17/P19 Recombinant antibody, PBS Only (Detector) 84912-1-PBS (241972C6). 100 µg. Concentration 1 mg/ml.

Unconjugated rabbit recombinant monoclonal antibody pair in PBS only storage buffer at a concentration of 1 mg/mL, ready for conjugation. Created using Proteintech's proprietary in-house recombinant technology. Recombinant production enables unrivalled batch-to-batch consistency, easy scale-up, and future security of supply.

Matched antibody pairs are designed for use in a variety of assays and platforms that require matched antibody pairs.

Antibody use should be optimized for each application and assay.

Storage

Storage:
Store at -80°C.
Storage buffer:
PBS only

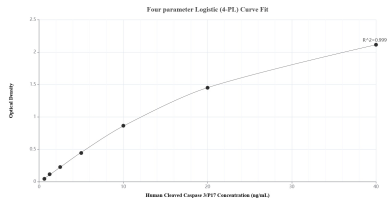
For technical support and original validation data for this product please contact:

T: 1 (888) 4PTGLAB (1-888-478-4522) (toll free
in USA), or 1(312) 455-8498 (outside USA)

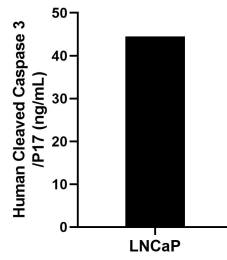
E: proteintech@ptglab.com
W: ptglab.com

**This product is exclusively available under Proteintech
Group brand and is not available to purchase from any
other manufacturer.**

Selected Validation Data



Sandwich ELISA standard curve of MP00104-4, Human Cleaved Caspase 3/P17/P19 Recombinant Matched Antibody Pair - PBS only. 84912-2-PBS was coated to a plate as the capture antibody and incubated with serial dilutions of standard SY02375. 84912-1-PBS was HRP conjugated as the detection antibody. Range: 0.625-40 ng/mL



The mean Cleaved Caspase 3/P17 concentration was determined to be 44.51 ng/mL in LNCaP cell extract based on a 2.00 mg/mL extract load.