

TRPS1 Recombinant Matched Antibody Pair, PBS Only

Catalog Number: MP00096-1

Capture Antibody Information

Catalog Number:
83062-1-PBS
Host:
Rabbit
Isotype:
IgG
Purification Method:
Protein A purification

Clone ID:
230051F11
Reactivity:
human
Immunogen Catalog Number:
Ag33959

Conjugate:
Unconjugated
Full name:
trichorhinophalangeal syndrome I
Gene ID:
7227
Affinity:
 $K_D = 5.92 \times 10^{-10}M$
 $K_{Off} = 1.98 \times 10^{-4}M$
 $K_{On} = 3.35 \times 10^5M$

Detection Antibody Information

Catalog Number:
83062-3-PBS
Host:
Rabbit
Isotype:
IgG
Purification Method:
Protein A purification

Clone ID:
230051G2
Reactivity:
human
GenBank:
BC125020
Immunogen Catalog Number:
Ag33959

Conjugate:
Unconjugated
Full name:
trichorhinophalangeal syndrome I
Gene ID:
7227
Affinity:
 $K_D = 2.32 \times 10^{-10}M$
 $K_{Off} = 3.42 \times 10^{-5}M$
 $K_{On} = 1.48 \times 10^5M$

Applications

Tested Applications:
Cytometric bead array, Sandwich ELISA

Range:
0.625-20 ng/mL (Cytometric Bead Array)
39.1-2500 pg/mL (Sandwich ELISA)

Recommended Dilutions:
It is recommended that this reagent should be titrated in each testing system to obtain optimal results.

Product Information

MP00096-1 targets TRPS1 in immunoassays as a matched antibody pair. Validated in Cytometric bead array, Sandwich ELISA.

Capture antibody: TRPS1 Recombinant antibody, PBS Only (Capture/Detector) 83062-1-PBS (230051F11). 100 µg. Concentration 1 mg/ml.

Detection antibody: TRPS1 Recombinant antibody, PBS Only (Detector) 83062-3-PBS (230051G2). 100 µg. Concentration 1 mg/ml.

Unconjugated rabbit recombinant monoclonal antibody pair in PBS only storage buffer at a concentration of 1 mg/mL, ready for conjugation. Created using Proteintech's proprietary in-house recombinant technology. Recombinant production enables unrivalled batch-to-batch consistency, easy scale-up, and future security of supply.

Matched antibody pairs are designed for use in a variety of assays and platforms that require matched antibody pairs.

Antibody use should be optimized for each application and assay.

Storage

Storage:
Store at -80°C.
Storage buffer:
PBS only

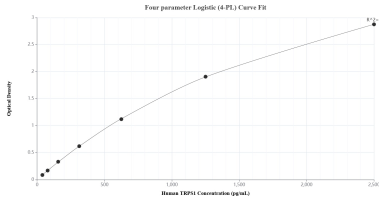
For technical support and original validation data for this product please contact:

T: 1 (888) 4PTGLAB (1-888-478-4522) (toll free in USA), or 1(312) 455-8498 (outside USA)

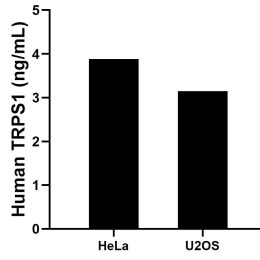
E: proteintech@ptglab.com
W: ptglab.com

This product is exclusively available under Proteintech Group brand and is not available to purchase from any other manufacturer.

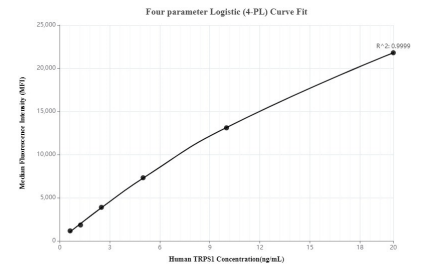
Selected Validation Data



Sandwich ELISA standard curve of MP00096-1, Human TRPS1 Recombinant Matched Antibody Pair - PBS only. 83062-1-PBS was coated to a plate as the capture antibody and incubated with serial dilutions of standard Ag33959. 83062-3-PBS was HRP conjugated as the detection antibody. Range: 39.1-2500 pg/mL.



The mean TRPS1 concentration was determined to be 3.9 ng/mL in HeLa cell extract based on a 1.0 mg/mL extract load and 3.2 ng/mL in U2OS cell extract based on a 3.5 mg/mL extract load.



Cytometric bead array standard curve of MP00096-1, TRPS1 Recombinant Matched Antibody Pair - PBS only. Capture antibody: 83062-1-PBS. Detection antibody: 83062-3-PBS. Standard: Ag33959. Range: 0.625-20 ng/mL.