

For Research Use Only

ENG Recombinant Matched Antibody Pair, PBS Only



Catalog Number: MP00089-2

Capture Antibody Information

Catalog Number:
82993-4-PBS
Host:
Rabbit
Isotype:
IgG
Purification Method:
Protein A purification

Clone ID:
230047H5
Reactivity:
Human

Conjugate:
Unconjugated
Full name:
endoglin
Gene ID:
2022

Detection Antibody Information

Catalog Number:
82993-3-PBS
Host:
Rabbit
Isotype:
IgG
Purification Method:
Protein A purification

Clone ID:
230047C7
Reactivity:
Human
GenBank:
BC014271

Conjugate:
Unconjugated
Full name:
endoglin
Gene ID:
2022

Applications

Tested Applications:
Cytometric bead array, Sandwich ELISA

Range:
2.5-20 ng/mL (Cytometric Bead Array)
0.156-10 ng/mL (Sandwich ELISA)

Recommended Dilutions:
It is recommended that this reagent should be titrated in each testing system to obtain optimal results.

Product Information

MP00089-2 targets ENG in immunoassays as a matched antibody pair. Validated in Cytometric bead array, Sandwich ELISA.

Capture antibody: Endoglin/CD105 Recombinant antibody, PBS Only (Capture) 82993-4-PBS (230047H5). 100 µg. Concentration 1 mg/ml.

Detection antibody: Endoglin/CD105 Recombinant antibody, PBS Only (Detector) 82993-3-PBS (230047C7). 100 µg. Concentration 1 mg/ml.

Alternative ENG matched antibody pairs: MP00089-1, MP50103-1

Unconjugated rabbit recombinant monoclonal antibody pair in PBS only (BSA and azide free) storage buffer at a concentration of 1 mg/mL, ready for conjugation. Created using Proteintech's proprietary in-house recombinant technology. Recombinant production enables unrivalled batch-to-batch consistency, easy scale-up, and future security of supply.

Matched antibody pairs are designed for use in a variety of assays and platforms that require matched antibody pairs.

Antibody use should be optimized for each application and assay.

Storage

Storage:
Store at -80°C.
Storage buffer:
PBS only

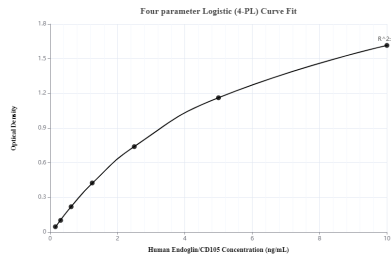
For technical support and original validation data for this product please contact:

T: 1 (888) 4PTGLAB (1-888-478-4522) (toll free in USA), or 1(312) 455-8498 (outside USA)

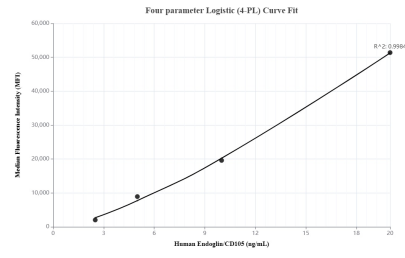
E: proteintech@ptglab.com
W: ptglab.com

This product is exclusively available under Proteintech Group brand and is not available to purchase from any other manufacturer.

Selected Validation Data



Sandwich ELISA standard curve of MP00089-2, ENG Recombinant Matched Antibody Pair, PBS Only. Capture antibody: 82993-4-PBS. Detection antibody: 82993-3-PBS. Standard: Eg0587. Range: 0.156-10 ng/mL



Cytometric bead array standard curve of MP00089-2, ENG Recombinant Matched Antibody Pair, PBS Only. Capture antibody: 82993-4-PBS. Detection antibody: 82993-3-PBS. Standard: Eg0587. Range: 2.5-20 ng/mL