

For Research Use Only

EIF2S1 Recombinant Matched Antibody Pair, PBS Only



Catalog Number:MP00076-4

Capture Antibody Information

Catalog Number:
82936-6-PBS

Host:
Rabbit

Isotype:
IgG

Purification Method:
Protein A purification

Clone ID:
230245F2

Reactivity:
human

Immunogen Catalog Number:
Ag1645

Conjugate:
Unconjugated

Full name:
eukaryotic translation initiation factor 2, subunit 1 alpha, 35kDa

Gene ID:
1965

Detection Antibody Information

Catalog Number:
82936-5-PBS

Host:
Rabbit

Isotype:
IgG

Purification Method:
Protein A purification

Clone ID:
230245E7

Reactivity:
human

GenBank:
BC002513

Immunogen Catalog Number:
Ag1645

Conjugate:
Unconjugated

Full name:
eukaryotic translation initiation factor 2, subunit 1 alpha, 35kDa

Gene ID:
1965

Applications

Tested Applications:
Sandwich ELISA

Range:
0.156-10 ng/mL (Sandwich ELISA)

Recommended Dilutions:
It is recommended that this reagent should be titrated in each testing system to obtain optimal results.

Product Information

MP00076-4 targets EIF2S1 in immunoassays as a matched antibody pair. Validated in Sandwich ELISA.

Capture antibody: EIF2S1 Recombinant antibody, PBS Only (Capture) 82936-6-PBS (230245F2). 100 µg. Concentration 1 mg/ml.

Detection antibody: EIF2S1 Recombinant antibody, PBS Only (Detector) 82936-5-PBS (230245E7). 100 µg. Concentration 1 mg/ml.

Alternative EIF2S1 matched antibody pairs: MP00076-1, MP00076-2, MP00076-3, MP50179-1

Unconjugated rabbit recombinant monoclonal antibody pair in PBS only storage buffer at a concentration of 1 mg/mL, ready for conjugation. Created using Proteintech's proprietary in-house recombinant technology. Recombinant production enables unrivalled batch-to-batch consistency, easy scale-up, and future security of supply.

Matched antibody pairs are designed for use in a variety of assays and platforms that require matched antibody pairs.

Antibody use should be optimized for each application and assay.

Storage

Storage:
Store at -80°C.
Storage buffer:
PBS only

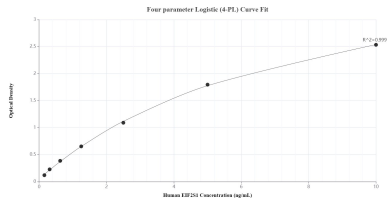
For technical support and original validation data for this product please contact:

T: 1 (888) 4PTGLAB (1-888-478-4522) (toll free in USA), or 1(312) 455-8498 (outside USA)

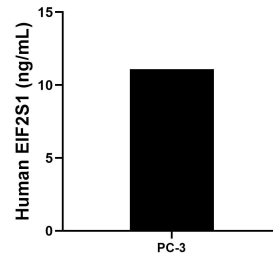
E: proteintech@ptglab.com
W: ptglab.com

This product is exclusively available under Proteintech Group brand and is not available to purchase from any other manufacturer.

Selected Validation Data



Sandwich ELISA standard curve of MP00076-4, Human EIF2S1 Recombinant Matched Antibody Pair - PBS only. 82936-6-PBS was coated to a plate as the capture antibody and incubated with serial dilutions of standard Ag1645. 82936-5-PBS was HRP conjugated as the detection antibody. Range: 0.156-10 ng/mL



The mean EIF2S1 concentration was determined to be 11.12 ng/mL in PC-3 cell extract based on a 1.20 mg/mL extract load.