

For Research Use Only

MELK Recombinant Matched Antibody Pair, PBS Only



Catalog Number:MP00075-4

Capture Antibody Information

Catalog Number:
82893-2-PBS
Host:
Rabbit
Isotype:
IgG
Purification Method:
Protein A purification

Clone ID:
230106A4
Reactivity:
human, mouse
Immunogen Catalog Number:
Ag1897

Conjugate:
Unconjugated
Full name:
maternal embryonic leucine zipper kinase
Gene ID:
9833

Detection Antibody Information

Catalog Number:
82893-6-PBS
Host:
Rabbit
Isotype:
IgG
Purification Method:
Protein A purification

Clone ID:
230106E8
Reactivity:
human
GenBank:
BC014039
Immunogen Catalog Number:
Ag1897

Conjugate:
Unconjugated
Full name:
maternal embryonic leucine zipper kinase
Gene ID:
9833

Applications

Tested Applications:
Sandwich ELISA

Range:
0.313-20 ng/mL (Sandwich ELISA)

Recommended Dilutions:
It is recommended that this reagent should be titrated in each testing system to obtain optimal results.

Product Information

MP00075-4 targets MELK in immunoassays as a matched antibody pair. Validated in Sandwich ELISA.

Capture antibody: MELK Recombinant antibody, PBS Only (Capture/Detector) 82893-2-PBS (230106A4). 100 µg. Concentration 1 mg/ml.

Detection antibody: MELK Recombinant antibody, PBS Only (Detector) 82893-6-PBS (230106E8). 100 µg. Concentration 1 mg/ml.

Alternative MELK matched antibody pairs: MP00075-1, MP00075-2, MP00075-3

Unconjugated rabbit recombinant monoclonal antibody pair in PBS only storage buffer at a concentration of 1 mg/mL, ready for conjugation. Created using Proteintech's proprietary in-house recombinant technology. Recombinant production enables unrivalled batch-to-batch consistency, easy scale-up, and future security of supply.

Matched antibody pairs are designed for use in a variety of assays and platforms that require matched antibody pairs.

Antibody use should be optimized for each application and assay.

Storage

Storage:
Store at -80°C.
Storage buffer:
PBS only

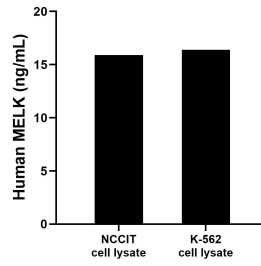
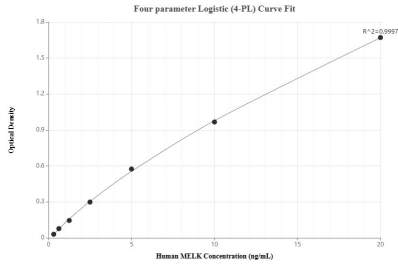
For technical support and original validation data for this product please contact:

T: 1 (888) 4PTGLAB (1-888-478-4522) (toll free in USA), or 1(312) 455-8498 (outside USA)

E: proteintech@ptglab.com
W: ptglab.com

This product is exclusively available under Proteintech Group brand and is not available to purchase from any other manufacturer.

Selected Validation Data



Sandwich ELISA standard curve of MP00075-4, Human MELK Recombinant Matched Antibody Pair - PBS only. 82893-2-PBS was coated to a plate as the capture antibody and incubated with serial dilutions of standard Ag1897. 82893-6-PBS was HRP conjugated as the detection antibody. Range: 0.313-20 ng/mL

NCCIT and K-562 cell lysate were measured. The human MELK concentration of detected samples was determined to be 15.9 ng/mL (based on a 4.5 mg/mL extract load) in NCCIT cell lysate and 16.4 ng/mL (based on a 4.5 mg/mL extract load) in K-562 cell lysate.