

For Research Use Only

CD14 Recombinant Matched Antibody Pair, PBS Only



Catalog Number:MP00058-4

Capture Antibody Information

Catalog Number:

83055-7-PBS

Host:

Rabbit

Isotype:

IgG

Purification Method:

Protein A purification

Clone ID:

230332C5

Reactivity:

human

Conjugate:

Unconjugated

Full name:

CD14 molecule

Gene ID:

929

Detection Antibody Information

Catalog Number:

83055-1-PBS

Host:

Rabbit

Isotype:

IgG

Purification Method:

Protein A purification

Clone ID:

230332C4

Reactivity:

human

GenBank:

BC010507

Conjugate:

Unconjugated

Full name:

CD14 molecule

Gene ID:

929

Applications

Tested Applications:

Sandwich ELISA

Range:

15.6-1000 pg/mL (Sandwich ELISA)

Recommended Dilutions:

It is recommended that this reagent should be titrated in each testing system to obtain optimal results.

Product Information

MP00058-4 targets CD14 in immunoassays as a matched antibody pair. Validated in Sandwich ELISA.

Capture antibody: CD14 Recombinant antibody, PBS Only (Capture) 83055-7-PBS (230332C5). 100 µg. Concentration 1 mg/mL.

Detection antibody: CD14 Recombinant antibody, PBS Only (Detector) 83055-1-PBS (230332C4). 100 µg. Concentration 1 mg/mL.

Alternative CD14 matched antibody pairs: MP00058-1, MP00058-2, MP00058-3, MP00313-1, MP50282-1, MP50282-2

Unconjugated rabbit recombinant monoclonal antibody pair in PBS only storage buffer at a concentration of 1 mg/mL, ready for conjugation. Created using Proteintech's proprietary in-house recombinant technology.

Recombinant production enables unrivalled batch-to-batch consistency, easy scale-up, and future security of supply.

Matched antibody pairs are designed for use in a variety of assays and platforms that require matched antibody pairs.

Antibody use should be optimized for each application and assay.

Storage

Storage:

Store at -80°C.

Storage buffer:

PBS only

For technical support and original validation data for this product please contact:

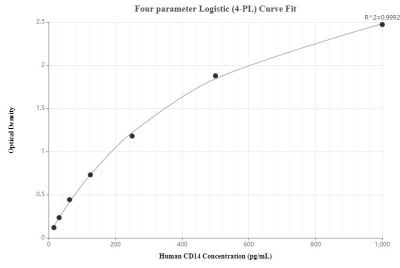
T: 1 (888) 4PTGLAB (1-888-478-4522) (toll free in USA), or 1(312) 455-8498 (outside USA)

E: proteintech@ptglab.com

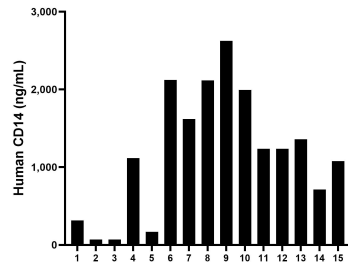
W: ptglab.com

This product is exclusively available under Proteintech Group brand and is not available to purchase from any other manufacturer.

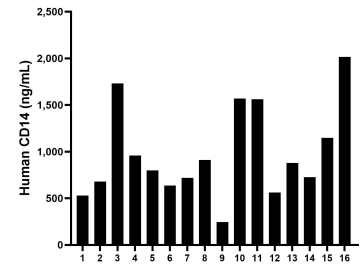
Selected Validation Data



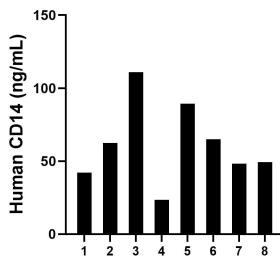
Sandwich ELISA standard curve of MP00058-4, CD14 Recombinant Matched Antibody Pair - PBS only. 83055-7-PBS was coated to a plate as the capture antibody and incubated with serial dilutions of standard Eg0498. 83055-1-PBS was HRP conjugated as the detection antibody. Range: 15.6-1000 pg/mL



Serum of fifteen individual healthy human donors was measured. The CD14 concentration of detected samples was determined to be 1189.4 ng/mL with a range of 69.0 - 2626.1 ng/mL



Plasma of sixteen individual healthy human donors was measured. The CD14 concentration of detected samples was determined to be 979.3 ng/mL with a range of 246.0 - 2015.1 ng/mL



Saliva of eight individual healthy human donors was measured. The CD14 concentration of detected samples was determined to be 61.4 ng/mL with a range of 23.6 - 110.8 ng/mL