

For Research Use Only

SLC25A3 Recombinant Matched Antibody Pair, PBS Only



Catalog Number:MP00046-1

Capture Antibody Information

Catalog Number:
82988-4-PBS
Host:
Rabbit
Isotype:
IgG
Purification Method:
Protein A purification

Clone ID:
230054E7
Reactivity:
Human
Immunogen Catalog Number:
Ag0667

Conjugate:
Unconjugated
Full name:
solute carrier family 25 (mitochondrial carrier; phosphate carrier), member 3
Gene ID:
5250

Detection Antibody Information

Catalog Number:
82988-1-PBS
Host:
Rabbit
Isotype:
IgG
Purification Method:
Protein A purification

Clone ID:
230054A9
Reactivity:
Human
GenBank:
BC003504
Immunogen Catalog Number:
Ag0667

Conjugate:
Unconjugated
Full name:
solute carrier family 25 (mitochondrial carrier; phosphate carrier), member 3
Gene ID:
5250

Applications

Tested Applications:
Cytometric bead array

Range:
0.313-20 ng/mL (Cytometric Bead Array)

Recommended Dilutions:
It is recommended that this reagent should be titrated in each testing system to obtain optimal results.

Product Information

MP00046-1 targets SLC25A3 in immunoassays as a matched antibody pair. Validated in Cytometric bead array.

Capture antibody: SLC25A3 Recombinant antibody, PBS Only (Capture) 82988-4-PBS (230054E7). 100 µg. Concentration 1 mg/ml.

Detection antibody: SLC25A3 Recombinant antibody, PBS Only (Detector) 82988-1-PBS (230054A9). 100 µg. Concentration 1 mg/ml.

Alternative SLC25A3 matched antibody pairs: MP00046-2, MP00046-3

Unconjugated rabbit recombinant monoclonal antibody pair in PBS only (BSA and azide free) storage buffer at a concentration of 1 mg/mL, ready for conjugation. Created using Proteintech's proprietary in-house recombinant technology. Recombinant production enables unrivalled batch-to-batch consistency, easy scale-up, and future security of supply.

Matched antibody pairs are designed for use in a variety of assays and platforms that require matched antibody pairs.

Antibody use should be optimized for each application and assay.

Storage

Storage:
Store at -80°C.
Storage buffer:
PBS only

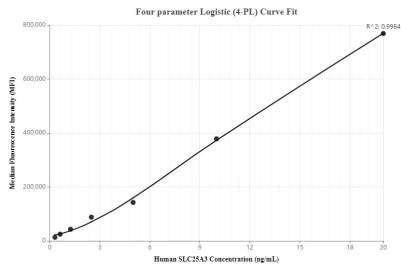
For technical support and original validation data for this product please contact:

T: 1 (888) 4PTGLAB (1-888-478-4522) (toll free in USA), or 1(312) 455-8498 (outside USA)

E: proteintech@ptglab.com
W: ptglab.com

This product is exclusively available under Proteintech Group brand and is not available to purchase from any other manufacturer.

Selected Validation Data



Cytometric bead array standard curve of MP00046-1, SLC25A3 Recombinant Matched Antibody Pair, PBS Only. Capture antibody: 82988-4-PBS. Detection antibody: 82988-1-PBS. Standard: Ag0667. Range: 0.313-20 ng/mL.