

For Research Use Only

COL6A3-Specific Recombinant Matched Antibody Pair, PBS Only



Catalog Number:MP00027-4

Capture Antibody Information

Catalog Number:

83010-4-PBS

Host:

Rabbit

Isotype:

IgG

Purification Method:

Protein A purification

Clone ID:

230540E3

Reactivity:

human

Immunogen Catalog Number:

Ag34752

Conjugate:

Unconjugated

Full name:

collagen, type VI, alpha 3

Gene ID:

1293

Detection Antibody Information

Catalog Number:

83010-5-PBS

Host:

Rabbit

Isotype:

IgG

Purification Method:

Protein A purification

Clone ID:

230540G6

Reactivity:

human

GenBank:

NM_004369

Immunogen Catalog Number:

Ag34752

Conjugate:

Unconjugated

Full name:

collagen, type VI, alpha 3

Gene ID:

1293

Applications

Tested Applications:

Sandwich ELISA

Range:

39.06-2500 pg/mL (Sandwich ELISA)

Recommended Dilutions:

It is recommended that this reagent should be titrated in each testing system to obtain optimal results.

Product Information

MP00027-4 targets COL6A3-Specific in immunoassays as a matched antibody pair. Validated in Sandwich ELISA.

Capture antibody: COL6A3-Specific Recombinant antibody, PBS Only (Capture/Detector) 83010-4-PBS (230540E3). 100 µg. Concentration 1 mg/mL.

Detection antibody: COL6A3-Specific Recombinant antibody, PBS Only (Detector) 83010-5-PBS (230540G6). 100 µg. Concentration 1 mg/mL.

Unconjugated rabbit recombinant monoclonal antibody pair in PBS only storage buffer at a concentration of 1 mg/mL, ready for conjugation. Created using Proteintech's proprietary in-house recombinant technology. Recombinant production enables unrivalled batch-to-batch consistency, easy scale-up, and future security of supply.

Matched antibody pairs are designed for use in a variety of assays and platforms that require matched antibody pairs.

Antibody use should be optimized for each application and assay.

Storage

Storage:

Store at -80°C.

Storage buffer:

PBS only

For technical support and original validation data for this product please contact:

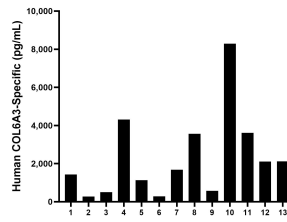
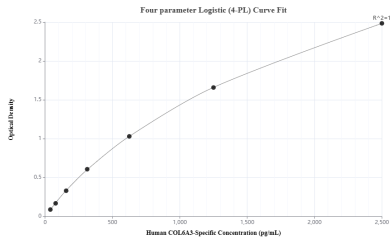
T: 1 (888) 4PTGLAB (1-888-478-4522) (toll free in USA), or 1(312) 455-8498 (outside USA)

E: proteintech@ptglab.com

W: ptglab.com

This product is exclusively available under Proteintech Group brand and is not available to purchase from any other manufacturer.

Selected Validation Data



Sandwich ELISA standard curve of MP00027-4, Human COL6A3-Specific Monoclonal Matched Antibody Pair - PBS only. 83010-4-PBS was coated to a plate as the capture antibody and incubated with serial dilutions of standard Ag34752. 83010-5-PBS was HRP conjugated as the detection antibody. Range: 39.06-2500 pg/mL

Serum of thirteen individual healthy human donors were measured. The human COL6A3-Specific concentration of detected samples was determined to be 2,299.8 pg/mL with a range of 274.4 - 8,287.33 pg/mL