

For Research Use Only

# KDR Recombinant Matched Antibody Pair, PBS Only



Catalog Number:MP00012-3

## Capture Antibody Information

**Catalog Number:**  
83049-2-PBS  
**Host:**  
Rabbit  
**Isotype:**  
IgG  
**Purification Method:**  
Protein A purification

**Clone ID:**  
230238D2  
**Reactivity:**  
human

**Conjugate:**  
Unconjugated  
**Full name:**  
kinase insert domain receptor (a type III receptor tyrosine kinase)  
**Gene ID:**  
3791  
**Affinity:**  
 $K_D = 1.15 \times 10^{-9}M$   
 $K_{Off} = 2.30 \times 10^{-4}M$   
 $K_{On} = 2.00 \times 10^5M$

## Detection Antibody Information

**Catalog Number:**  
83049-5-PBS  
**Host:**  
Rabbit  
**Isotype:**  
IgG  
**Purification Method:**  
Protein A purification

**Clone ID:**  
230238E8  
**Reactivity:**  
human  
**GenBank:**  
NM\_002253

**Conjugate:**  
Unconjugated  
**Full name:**  
kinase insert domain receptor (a type III receptor tyrosine kinase)  
**Gene ID:**  
3791

## Applications

**Tested Applications:**  
Sandwich ELISA

**Range:**  
78.1-5000 pg/mL (Sandwich ELISA)

**Recommended Dilutions:**  
It is recommended that this reagent should be titrated in each testing system to obtain optimal results.

## Product Information

MP00012-3 targets KDR in immunoassays as a matched antibody pair. Validated in Sandwich ELISA.

Capture antibody: KDR Recombinant antibody, PBS Only (Capture) 83049-2-PBS (230238D2). 100 µg. Concentration 1 mg/mL.

Detection antibody: KDR Recombinant antibody, PBS Only (Detector) 83049-5-PBS (230238E8). 100 µg. Concentration 1 mg/mL.

Alternative KDR matched antibody pairs: MP00012-1, MP00012-2, MP50080-1

Unconjugated rabbit recombinant monoclonal antibody pair in PBS only storage buffer at a concentration of 1 mg/mL, ready for conjugation. Created using Proteintech's proprietary in-house recombinant technology. Recombinant production enables unrivalled batch-to-batch consistency, easy scale-up, and future security of supply.

Matched antibody pairs are designed for use in a variety of assays and platforms that require matched antibody pairs.

Antibody use should be optimized for each application and assay.

## Storage

**Storage:**  
Store at -80°C.  
**Storage buffer:**  
PBS only

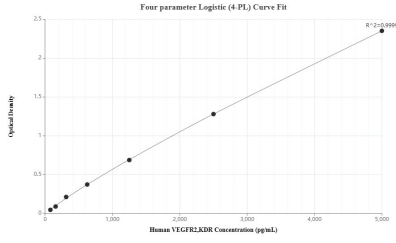
For technical support and original validation data for this product please contact:

T: 1 (888) 4PTGLAB (1-888-478-4522) (toll free in USA), or 1(312) 455-8498 (outside USA)

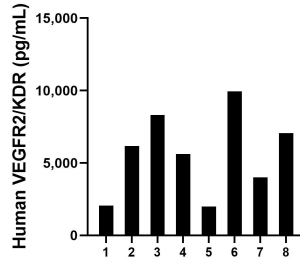
E: [proteintech@ptglab.com](mailto:proteintech@ptglab.com)  
W: [ptglab.com](http://ptglab.com)

**This product is exclusively available under Proteintech Group brand and is not available to purchase from any other manufacturer.**

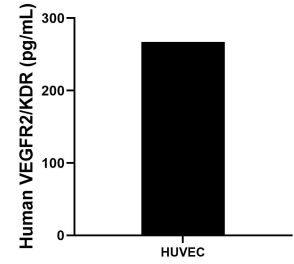
## Selected Validation Data



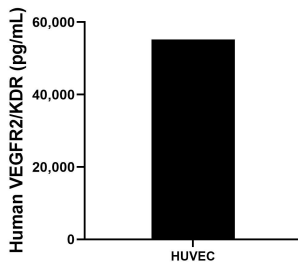
Sandwich ELISA standard curve of MP00012-3, Human VEGFR2/KDR Recombinant Matched Antibody Pair - PBS only. 83049-2-PBS was coated to a plate as the capture antibody and incubated with serial dilutions of standard Eg0218.83049-5-PBS was HRP conjugated as the detection antibody. Range: 78.1-5000 pg/mL



Plasma of eight individual healthy human donors was measured. The human VEGFR2/KDR concentration of detected samples was determined to be 5,643.5 ng/mL with a range of 1,988.2 - 9,946.0 pg/mL



HUVEC was cultured in RPMI supplemented with 10% fetal bovine serum, 50  $\mu$ M  $\beta$ -mercaptoethanol, 2 mM L-glutamine, 100 U/mL penicillin, and 100  $\mu$ g/mL streptomycin sulfate. An aliquot of the cell culture supernatant was removed, assayed for human VEGFR2/KDR, and measured 267.3 pg/mL



The mean human VEGFR2/KDR concentration was determined to be 55,216.6 pg/mL in HUVEC cell extract based on a 0.4 mg/mL extract load.