

For Research Use Only

PPP1R15B/CReP Recombinant Matched Antibody Pair, PBS Only



Catalog Number:MP00002-2

Capture Antibody Information

Catalog Number:
83016-3-PBS
Host:
Rabbit
Isotype:
IgG
Purification Method:
Protein A purification

Clone ID:
240052G3
Reactivity:
human
Immunogen Catalog Number:
Ag6213

Conjugate:
Unconjugated
Full name:
protein phosphatase 1, regulatory (inhibitor) subunit 15B
Gene ID:
84919

Detection Antibody Information

Catalog Number:
83016-2-PBS
Host:
Rabbit
Isotype:
IgG
Purification Method:
Protein A purification

Clone ID:
240052B11
Reactivity:
human
GenBank:
BC065280
Immunogen Catalog Number:
Ag6213

Conjugate:
Unconjugated
Full name:
protein phosphatase 1, regulatory (inhibitor) subunit 15B
Gene ID:
84919

Applications

Tested Applications:
Cytometric bead array, Sandwich ELISA

Range:
0.625-20 ng/mL (Cytometric Bead Array)
0.156-10 ng/mL (Sandwich ELISA)

Recommended Dilutions:
It is recommended that this reagent should be titrated in each testing system to obtain optimal results.

Product Information

MP00002-2 targets PPP1R15B/CReP in immunoassays as a matched antibody pair. Validated in Cytometric bead array, Sandwich ELISA.

Capture antibody: PPP1R15B/CReP Recombinant antibody, PBS Only (Capture) 83016-3-PBS (240052G3). 100 µg. Concentration 1 mg/ml.

Detection antibody: PPP1R15B/CReP Recombinant antibody, PBS Only (Detector) 83016-2-PBS (240052B11). 100 µg. Concentration 1 mg/ml.

Alternative PPP1R15B/CReP matched antibody pairs: MP00002-1, MP00002-3

Unconjugated rabbit recombinant monoclonal antibody pair in PBS only storage buffer at a concentration of 1 mg/mL, ready for conjugation. Created using Proteintech's proprietary in-house recombinant technology. Recombinant production enables unrivalled batch-to-batch consistency, easy scale-up, and future security of supply.

Matched antibody pairs are designed for use in a variety of assays and platforms that require matched antibody pairs.

Antibody use should be optimized for each application and assay.

Storage

Storage:
Store at -80°C.
Storage buffer:
PBS only

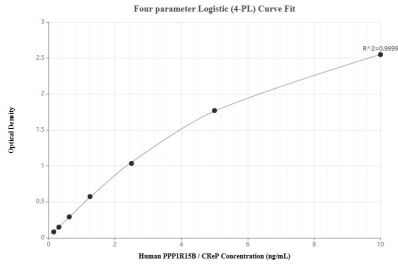
For technical support and original validation data for this product please contact:

T: 1 (888) 4PTGLAB (1-888-478-4522) (toll free in USA), or 1(312) 455-8498 (outside USA)

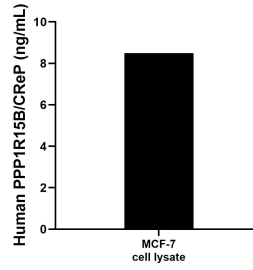
E: proteintech@ptglab.com
W: ptglab.com

This product is exclusively available under Proteintech Group brand and is not available to purchase from any other manufacturer.

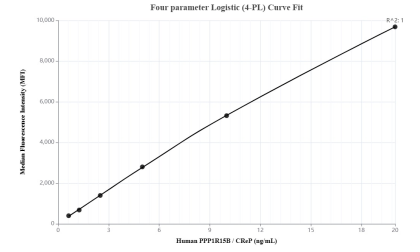
Selected Validation Data



Sandwich ELISA standard curve of MP00002-2, Human PPP1R15B/CReP Recombinant Matched Antibody Pair - PBS only. 83016-3-PBS was coated to a plate as the capture antibody and incubated with serial dilutions of standard Ag6213. 83016-2-PBS was HRP conjugated as the detection antibody. Range: 0.156-10 ng/mL



MCF-7 cell lysate was measured. The human PPP1R15B/CReP concentration of detected samples was determined to be 8.50 ng/mL (based on a 4.3 mg/mL extract load) in MCF-7 cell lysate.



Cytometric bead array standard curve of MP00002-2, PPP1R15B/CReP Recombinant Matched Antibody Pair, PBS Only. Capture antibody: 83016-3-PBS. Detection antibody: 83016-2-PBS. Standard: Ag6213. Range: 0.625-20 ng/mL