

For Research Use Only

Mouse CD3/CD28 T Cell Activation Beads Kit

Catalog Number: KMS311



Description

T lymphocytes are activated through MHC class II molecules on antigen-presenting cells (APC). After activation, T cells expand rapidly and secrete various cytokines. The Mouse CD3/CD28 T Cell Activation Beads Kit is designed to activate and expand mouse T cells. This kit contains Biotinylated anti-mouse CD3 and CD28 antibodies, as well as cell culture grade Streptavidin magnetic beads. After Streptavidin magnetic beads are loaded with biotinylated CD3/CD28, they mimic antigen presenting cells and can activate resting T lymphocytes from mouse splenocytes or purified T lymphocytes. After 2-3 days of activation, magnetic beads can easily be removed by magnet. Further T lymphocytes expansion may require specific additives for *in vitro* culture.

Product Information

KMS311-10:

- MS311A-10: 200µL 0.5mg/mL functional grade Biotin-CD3 (clone: 145-2C11)
- MS311B-10: 200µL 0.5mg/mL functional grade Biotin-CD28 (clone: 37.51.1)
- MS311C-10: 500µL cell culture grade Streptavidin magnetic beads (2×10^8 beads/mL)

KMS311-100:

- MS311A-100: 2000µL 0.5mg/mL functional grade Biotin-CD3 (clone: 145-2C11)
- MS311B-100: 2000µL 0.5mg/mL functional grade Biotin-CD28 (clone: 37.51.1)
- MS311C-100: 5000µL cell culture grade Streptavidin magnetic beads (2×10^8 beads/mL)

Package

10test/100test

Storage

2-8°C

Reactivity

Mouse

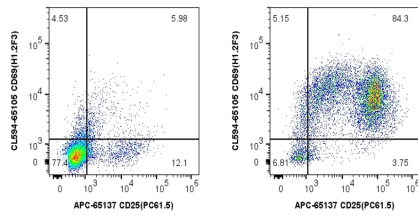
Beads diameter

2.7 µm

Recommend usage

20µL Biotin-CD3, 20µL Biotin-CD28 and 50µL Streptavidin magnetic beads; mix well and add 10µL buffer for incubation. 100µL antibody-loaded magnetic beads contains 1×10^7 magnetic particles and is used to activate 1×10^7 mouse splenocytes or purified mouse T lymphocytes in 2mL cell culture media (1:1 bead to cell ratio).

Validation Data



Representative example of BALB/c mouse splenocyte activation: 10^7 BALB/c mouse splenocytes in 2 ml cell culture media were activated by Mouse CD3/CD28 T cell Activation Beads Kit for 2 days at a 1.3:1 bead to cell ratio. Unstimulated cells (left panel) and stimulated cells (right panel) were stained with flow antibodies... APC-CD25 and CL594-CD69. Total viable lymphocytes were gated.

For technical support and original validation data for this product please contact

T: 1 (888) 4PTGLAB(1-888-478-4522)(toll free in USA), or
1(312) 455-8498(outside USA)

E: proteintech@ptglab.com
W: ptglab.com

This product is exclusively available under
Proteintech Group brand and is not available
to purchase from any other manufacturer.