

Human CD3 T Cell Isolation Kit

Catalog Number:KMS309

Description

CD3 is a multimeric protein associated with T cell receptor (TCR) to form a complex involved in antigen recognition and signal transduction. Human CD3 T Cell Isolation kit is designed to isolate untouched CD3 T cells which contains a biotin labeled antibody cocktail and streptavidin conjugated magnetic beads. Through incubation of samples with biotin antibody cocktail followed by incubation of streptavidin beads, the magnetically labeled non-CD3 cells will be retained in the tube by magnetic separator. The untouched CD3 T cells are collected in supernatant. Any downstream application can be performed on CD3 T cells after separation, such as Flow Cytometry and in vitro culture.

Components

KMS309-10:

- MS309A-10: 300µL Human CD3 T Cell Isolation Biotin Antibody Cocktail (CD14, CD15, CD19, CD56, CD36, CD235a, CD123)
- MS309B-10: 300µL streptavidin magnetic beads

KMS309-100:

- MS309A-100: 3mL Human CD3 T Cell Isolation Biotin Antibody Cocktail (CD14, CD15, CD19, CD56, CD36, CD235a, CD123)
- MS309B-100: 3mL streptavidin magnetic beads

Package

10test/100test

Storage

2-8°C

Reactivity

Human

Beads diameter

2.7 µm

Recommend usage

30µL biotin labeled antibody cocktail and 30µL streptavidin beads for 1×10^7 cells

For technical support and original validation data for this product please contact:

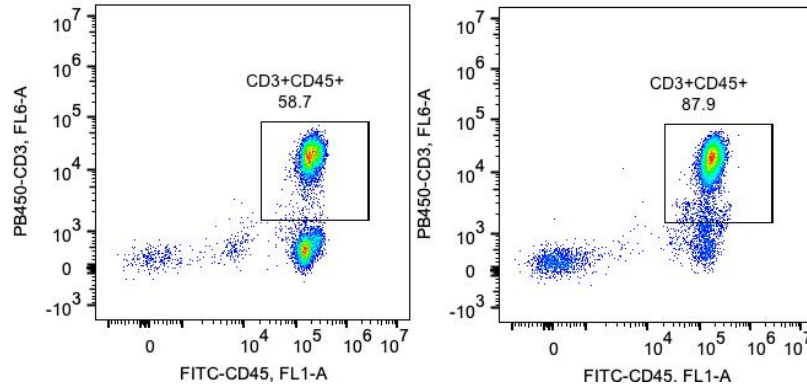
T: 1 (888) 4PTGLAB(1-888-478-4522)(toll free in USA), or 1(312) 455-8498(outside USA)

E: proteintech@ptglab.com
W: ptglab.com

This product is exclusively available under Proteintech Group brand and is not available to purchase from any other manufacturer.

Validation Data

Representative example of enrichment



Following cell separation, cell suspension was stained with PB450-CD3 (UCHT1) and FITC-CD45 (HI30) antibodies. All viable cells are gated in the analysis. Left upper panel: CD3+CD4+ cells before selection; right upper panel: CD3+CD4+ cells after selection. Human CD3 T cell selection kit is tested using PBMC from three donors.

For technical support and original validation data for this product please contact:

T: 1 (888) 4PTGLAB(1-888-478-4522)(toll free in USA), or 1(312) 455-8498(outside USA)

E: proteintech@ptglab.com
W: ptglab.com

This product is exclusively available under Proteintech Group brand and is not available to purchase from any other manufacturer.