

For Research Use Only.

Human CD16 Magnetic Beads Kit

Catalog Number:KMS006



Description

CD16, which is also known as FcγRIII, is a receptor for the Fcγ portion of IgG and is involved in antibody dependent cellular cytotoxicity. 5%-10% human peripheral blood mononuclear cells (PBMC) express CD16. Human CD16 Magnetic Beads Kit is used for isolation or depletion of human CD16 NK cells/monocytes from PBMC, whole blood, or other sample types. Following incubation with biotinylated human CD16 antibody and Streptavidin magnetic beads, the cell sample is placed on a magnet. CD16+ cells remain attached to magnetic beads after separation and can be used for downstream applications, such as in cell expansion. CD16- cells remain in supernatant and can also be used for further applications.

Components

KMS006-10:

- MS001-10: 100μL 10mg/mL streptavidin magnetic beads
- MS65090-10: 100μL 0.1mg/mL Biotin-CD16 (clone: 3G8)

KMS006-100:

- MS001-100: 1mL 10mg/mL streptavidin magnetic beads
- MS65090-100: 1mL 0.1mg/mL Biotin-CD16 (clone: 3G8)

Package

10test/100test

Storage

2-8°C

Reactivity

Human

Recommend usage

10μL Biotin-CD16 antibody and 10μL streptavidin beads for 1×10^7 cells.

For technical support and original validation data for this product please contact:

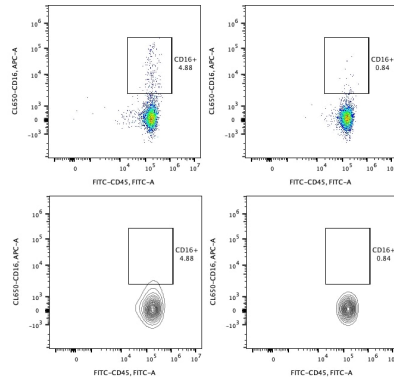
T: 1 (888) 4PTGLAB(1-888-478-4522)(toll free in USA), or 1(312) 455-8498(outside USA)

E: proteintech@ptglab.com
W: ptglab.com

This product is exclusively available under Proteintech Group brand and is not available to purchase from any other manufacturer.

Validation Data

Representative example of depletion



Following cell separation, cell suspension was stained with FITC-CD45(F10-89-4) and CL650-CD16(3G8) antibodies. All viable cells are gated in the analysis. Left panel: CD16+CD45+ cells before selection. Right panel: CD16+CD45+ cells after depletion. Human CD16 magnetic beads kit is tested using PBMC from three donors.

For technical support and original validation data for this product please contact:

T: 1 (888) 4PTGLAB(1-888-478-4522)(toll free in USA), or 1(312) 455-8498(outside USA)

E: proteintech@ptglab.com
W: ptglab.com

This product is exclusively available under Proteintech Group brand and is not available to purchase from any other manufacturer.