

Human CD3 Magnetic Beads Kit

Catalog Number: KMS001

Description

CD3 is a multimeric protein associated with T cell receptor (TCR) to form a complex involved in antigen recognition and signal transduction. 45%-70% human peripheral blood mononuclear cells (PBMC) express CD3. Human CD3 Magnetic Beads Kit is used for isolation or depletion of human CD3 T lymphocytes from PBMC, whole blood, or other sample types. Following incubation with biotinylated human CD3 antibody and Streptavidin magnetic beads, the cell sample is placed on a magnet. CD3+ cells remain attached to magnetic beads after separation and can be used for downstream applications, such as in cell expansion. CD3- cells remain in supernatant and can also be used for further applications.

Components

KMS001-10:
· MS001-10: 100µL 10mg/mL streptavidin magnetic beads
· MS65133-10: 100µL 0.1mg/mL Biotin-CD3 (clone: OKT3)
KMS001-100:
· MS001-100: 1mL 10mg/mL streptavidin magnetic beads
· MS65133-100: 1mL 0.1mg/mL Biotin-CD3 (clone: OKT3)

Package

10test/100test

Storage

2-8°C

Reactivity

Human

Recommend usage

10µL Biotin-CD3 antibody and 10µL streptavidin beads for 1×10^7 cells

For technical support and original validation data for this product please contact:

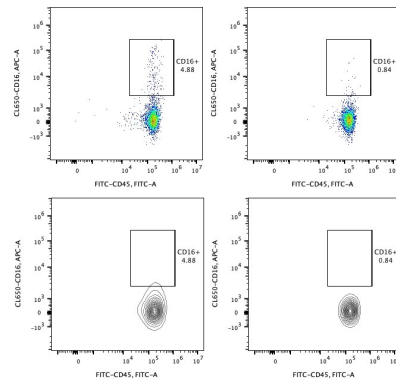
T: 1 (888) 4PTGLAB(1-888-478-4522)(toll free in USA), or 1(312) 455-8498(outside USA)

E: proteintech@ptglab.com
W: ptglab.com

This product is exclusively available under Proteintech Group brand and is not available to purchase from any other manufacturer.

Validation Data

Representative example of enrichment and depletion



Following cell separation, cell suspension was stained with FITC-CD45(F10-89-4) and PE-CD3(UCHT1) antibodies. All viable cells are gated in the analysis. Left panel: CD3+CD45+ cells before selection. Middle panel: CD3+CD45+ cells after enrichment. Right panel: CD3+CD45+ cells after depletion. Human CD3 magnetic beads kit is tested using PBMC from three donors.

For technical support and original validation data for this product please contact:

T: 1 (888) 4PTGLAB(1-888-478-4522)(toll free in USA), or 1(312) 455-8498(outside USA)

E: proteintech@ptglab.com
W: ptglab.com

This product is exclusively available under Proteintech Group brand and is not available to purchase from any other manufacturer.