

IHC*easy* PIP4K2C Ready-To-Use IHC Kit

Catalog Number: **KHC2709**

General Information

Sample type:
FFPE tissue

Cited sample type:

Reactivity:
Human, Mouse

Cited Reactivity:

Assay type:
Immunohistochemistry

Primary antibody type:
Rabbit Polyclonal

Secondary antibody type:
Polymer-HRP-Goat anti-Rabbit

Kit Component

Component	Size	Concentration
Antigen Retrieval Buffer	100 mL	50×
Washing Buffer	100 mL ×2	20×
Blocking Buffer	5 mL	RTU
Primary Antibody	5 mL	RTU
Secondary Antibody	5 mL	RTU
Chromogen Component A	0.2 mL	RTU
Chromogen Component B	4 mL	RTU
Signal Enhancer	5 mL	RTU
Counter Staining Reagent	5 mL	RTU
Mounting Media	5 mL	RTU
Control Slide	1 slide (Optional)	FFPE
Datasheet	1 Copy	
Manual	1 Copy	

Storage Instructions

All the reagents are stored at 2-8°C. The kit is stable for 6 months from the date of receipt.

Background

PIP4K2C is involved in several processes, including 1-phosphatidyl-1D-myo-inositol 4,5-bisphosphate biosynthetic process; negative regulation of 1-phosphatidylinositol-4-phosphate 5-kinase activity; and positive regulation of autophagosome assembly. PIP4Ks negatively regulate insulin signaling through a catalytic-independent mechanism.

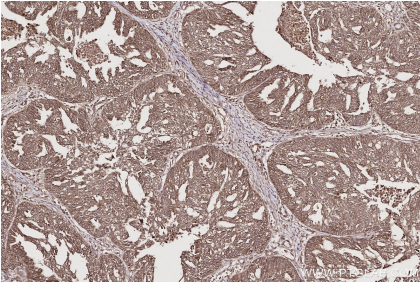
Synonyms

PIP4K2C, EC:2.7.1.149, Phosphatidylinositol 5-phosphate 4-kinase type II gamma, Phosphatidylinositol 5-phosphate 4-kinase type-2 gamma, PI(5)P 4-kinase type II gamma

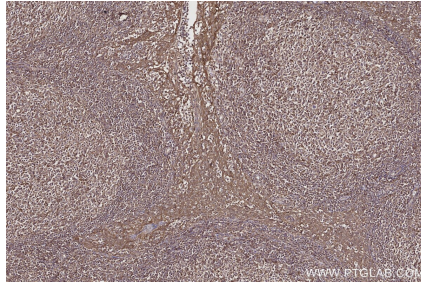
For technical support and original validation data for this product please contact:
T: 1 (888) 4PTGLAB (1-888-478-4522) (toll free in USA), or 1(312) 455-8498 (outside USA)
E: proteintech@ptglab.com
W: ptglab.com

This product is exclusively available under Proteintech Group brand and is not available to purchase from any other manufacturer.

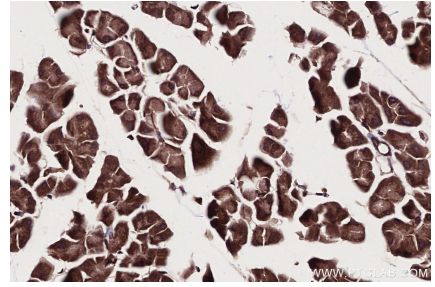
Selected Validation Data



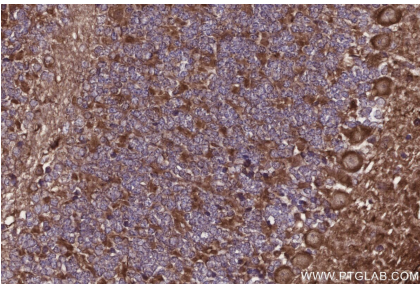
Immunohistochemical analysis of paraffin-embedded human ovary cancer tissue slide using KHC2709 (PIP4K2C IHC Kit).



Immunohistochemical analysis of paraffin-embedded human tonsillitis tissue slide using KHC2709 (PIP4K2C IHC Kit).



Immunohistochemical analysis of paraffin-embedded mouse pancreas tissue slide using KHC2709 (PIP4K2C IHC Kit).



Immunohistochemical analysis of paraffin-embedded mouse cerebellum tissue slide using KHC2709 (PIP4K2C IHC Kit).