

IHC*easy* GADD45GIP1 Ready-To-Use IHC Kit

Catalog Number: **KHC2704**

General Information

Sample type:
FFPE tissue
Cited sample type:
Reactivity:
Human
Cited Reactivity:

Assay type:
Immunohistochemistry
Primary antibody type:
Rabbit Recombinant
Secondary antibody type:
Polymer-HRP-Goat anti-Rabbit

Kit Component

Component	Size	Concentration
Antigen Retrieval Buffer	100 mL	50×
Washing Buffer	100 mL ×2	20×
Blocking Buffer	5 mL	RTU
Primary Antibody	5 mL	RTU
Secondary Antibody	5 mL	RTU
Chromogen Component A	0.2 mL	RTU
Chromogen Component B	4 mL	RTU
Signal Enhancer	5 mL	RTU
Counter Staining Reagent	5 mL	RTU
Mounting Media	5 mL	RTU
Control Slide	1 slide (Optional)	FFPE
Datasheet	1 Copy	
Manual	1 Copy	

Storage Instructions

All the reagents are stored at 2-8°C. The kit is stable for 6 months from the date of receipt.

Background

Growth arrest and DNA-damage-inducible proteins-interacting protein 1(GADD45GIP1), also known as CRIF1, is newly identified de novo components in large subunit of mitoribosome. It is essential for the translation of mitochondrial oxidative phosphorylation (OXPHOS) polypeptides in mammalian mitochondria. The essential role of CRIF1 in mitochondrial synthesis and membrane integration of OXPHOS polypeptides was shown in brain-specific CRIF1-deficient mice, which exhibited profound OXPHOS failure and marked neurodegeneration. (PMID 22819524) In addition, GADD45GIP1 enhances the function of GADD45 in maintaining genome stability, DNA repair and cell cycle regulation by interacting with the GADD45 protein family. It's reported that GADD45GIP1 may be induced by p53, a process that is closely related to the cell's response to DNA damage.

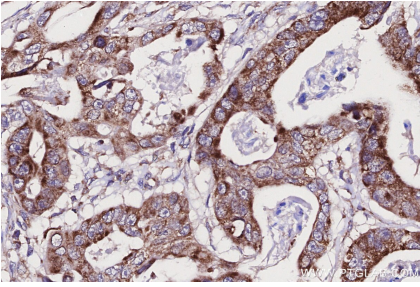
Synonyms

GADD45GIP1, 39S ribosomal protein L59, mitochondrial, CKBBP2, CKII beta-associating protein, CR6-interacting factor 1

For technical support and original validation data for this product please contact:
T: 1 (888) 4PTGLAB (1-888-478-4522) (toll free in USA), or 1(312) 455-8498 (outside USA)
E: proteintech@ptglab.com
W: ptglab.com

This product is exclusively available under Proteintech Group brand and is not available to purchase from any other manufacturer.

Selected Validation Data



Immunohistochemical analysis of paraffin-embedded human stomach cancer tissue slide using KHC2704 (GADD45GIP1 IHC Kit).