

IHC*easy* AFAP1L2 Ready-To-Use IHC Kit

Catalog Number: **KHC2676**

General Information

Sample type:
FFPE tissue
Cited sample type:
Reactivity:
Human
Cited Reactivity:

Assay type:
Immunohistochemistry
Primary antibody type:
Rabbit Polyclonal
Secondary antibody type:
Polymer-HRP-Goat anti-Rabbit

Kit Component

Component	Size	Concentration
Antigen Retrieval Buffer	100 mL	50×
Washing Buffer	100 mL ×2	20×
Blocking Buffer	5 mL	RTU
Primary Antibody	5 mL	RTU
Secondary Antibody	5 mL	RTU
Chromogen Component A	0.2 mL	RTU
Chromogen Component B	4 mL	RTU
Signal Enhancer	5 mL	RTU
Counter Staining Reagent	5 mL	RTU
Mounting Media	5 mL	RTU
Control Slide	1 slide (Optional)	FFPE
Datasheet	1 Copy	
Manual	1 Copy	

Storage Instructions

All the reagents are stored at 2-8°C. The kit is stable for 6 months from the date of receipt.

Background

AFAP1L2, also named as Actin filament-associated protein 1-like 2 or XB130, is a 818 amino acid protein, which contains two PH domains. AFAP1L2 is detected in spleen and thyroid, and at lower levels in kidney, brain, lung and pancreas. AFAP1L2 localizes in the cytoplasm and may play a role in a signaling cascade by enhancing the kinase activity of SRC. AFAP1L2 promotes thyroid tumor growth, and its expression in these cancer cells may affect cell proliferation and survival by controlling the expression of multiple genes, especially transcription regulators.

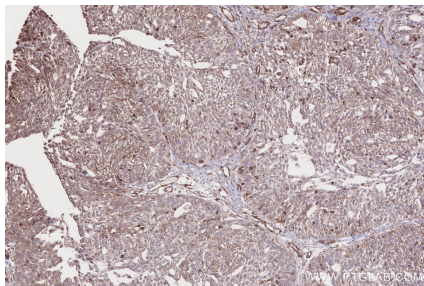
Synonyms

Actin filament-associated protein 1-like 2, AFAP1L2

For technical support and original validation data for this product please contact:
T: 1 (888) 4PTGLAB (1-888-478-4522) (toll free in USA), or 1(312) 455-8498 (outside USA)
E: proteintech@ptglab.com
W: ptglab.com

This product is exclusively available under Proteintech Group brand and is not available to purchase from any other manufacturer.

Selected Validation Data



Immunohistochemical analysis of paraffin-embedded human ovary cancer tissue slide using KHC2676 (AFAP1L2 IHC Kit).