

IHC*easy* ARHGAP24 Ready-To-Use IHC Kit

Catalog Number: **KHC2669**

General Information

Sample type:
FFPE tissue

Cited sample type:

Reactivity:
Human, Mouse, Rat

Cited Reactivity:

Assay type:
Immunohistochemistry

Primary antibody type:
Rabbit Polyclonal

Secondary antibody type:
Polymer-HRP-Goat anti-Rabbit

Kit Component

Component	Size	Concentration
Antigen Retrieval Buffer	100 mL	50×
Washing Buffer	100 mL ×2	20×
Blocking Buffer	5 mL	RTU
Primary Antibody	5 mL	RTU
Secondary Antibody	5 mL	RTU
Chromogen Component A	0.2 mL	RTU
Chromogen Component B	4 mL	RTU
Signal Enhancer	5 mL	RTU
Counter Staining Reagent	5 mL	RTU
Mounting Media	5 mL	RTU
Control Slide	1 slide (Optional)	FFPE
Datasheet	1 Copy	
Manual	1 Copy	

Storage Instructions

All the reagents are stored at 2-8°C. The kit is stable for 6 months from the date of receipt.

Background

ARHGAP24, also named as FILGAP, is involved in cell polarity, cell morphology and cytoskeletal organization. ARHGAP24 acts as a GTPase activator for the Rac-type GTPase by converting it to an inactive GDP-bound state. ARHGAP24 controls actin remodeling by inactivating Rac downstream of Rho leading to suppress leading edge protrusion and promotes cell retraction to achieve cellular polarity. ARHGAP24 can suppress the activity of RAC1 and CDC42 in vitro. Its overexpression induces cell rounding with partial or complete disruption of actin stress fibers and formation of membrane ruffles, lamellipodia, and filopodia. Isoform 2 is a vascular cell-specific GAP involved in modulation of angiogenesis. Primary antibody in this kit may recognize all the isoforms of ARHGAP24 except isoform 5.

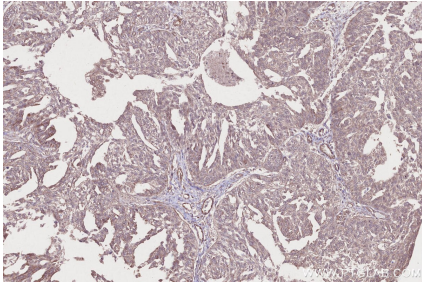
Synonyms

ARHGAP24, Filamin-A-associated RhoGAP, FilGAP, RAC1-

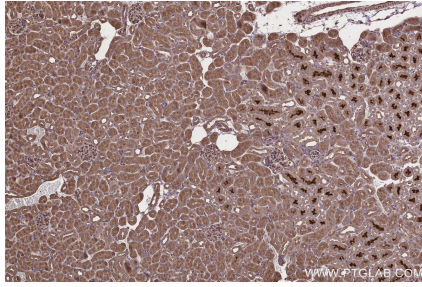
For technical support and original validation data for this product please contact:
T: 1 (888) 4PTGLAB (1-888-478-4522) (toll free in USA), or 1(312) 455-8498 (outside USA)
E: proteintech@ptglab.com
W: ptglab.com

This product is exclusively available under Proteintech Group brand and is not available to purchase from any other manufacturer.

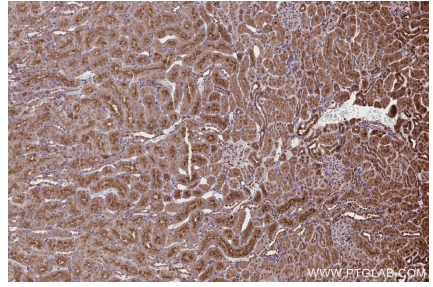
Selected Validation Data



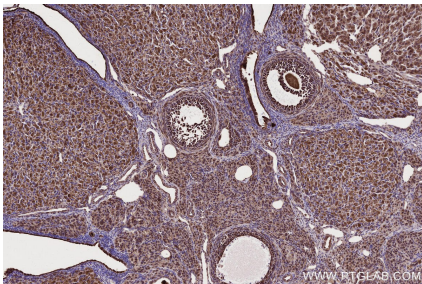
Immunohistochemical analysis of paraffin-embedded human ovary cancer tissue slide using KHC2669 (ARHGAP24 IHC Kit).



Immunohistochemical analysis of paraffin-embedded mouse kidney tissue slide using KHC2669 (ARHGAP24 IHC Kit).



Immunohistochemical analysis of paraffin-embedded rat kidney tissue slide using KHC2669 (ARHGAP24 IHC Kit).



Immunohistochemical analysis of paraffin-embedded rat ovary tissue slide using KHC2669 (ARHGAP24 IHC Kit).