

IHC*easy* RAB43 Ready-To-Use IHC Kit

Catalog Number: **KHC2640**

General Information

Sample type:
FFPE tissue

Cited sample type:

Reactivity:
Human, Mouse, Rat

Cited Reactivity:

Assay type:
Immunohistochemistry

Primary antibody type:
Rabbit Polyclonal

Secondary antibody type:
Polymer-HRP-Goat anti-Rabbit

Kit Component

Component	Size	Concentration
Antigen Retrieval Buffer	100 mL	50×
Washing Buffer	100 mL ×2	20×
Blocking Buffer	5 mL	RTU
Primary Antibody	5 mL	RTU
Secondary Antibody	5 mL	RTU
Chromogen Component A	0.2 mL	RTU
Chromogen Component B	4 mL	RTU
Signal Enhancer	5 mL	RTU
Counter Staining Reagent	5 mL	RTU
Mounting Media	5 mL	RTU
Control Slide	1 slide (Optional)	FFPE
Datasheet	1 Copy	
Manual	1 Copy	

Storage Instructions

All the reagents are stored at 2-8°C. The kit is stable for 6 months from the date of receipt.

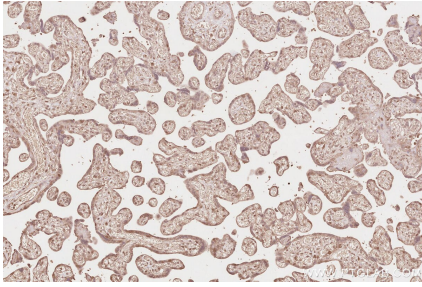
Background

Ras-related GTP-binding protein 43 (RAB43) is a member of the Ras superfamily. RAB43 is mainly located in endoplasmic reticulum and Golgi, and plays a role as a key regulator of vesicle movement, signal transduction and tethering membrane events in membrane trafficking.

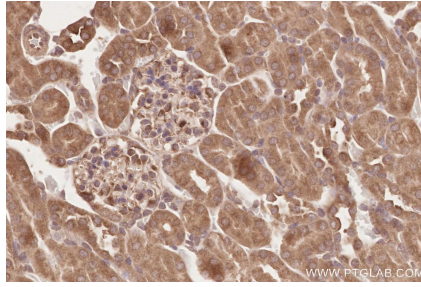
Synonyms

RAB43, ISY1, RAB11B, RAB41, Ras related protein Rab 41

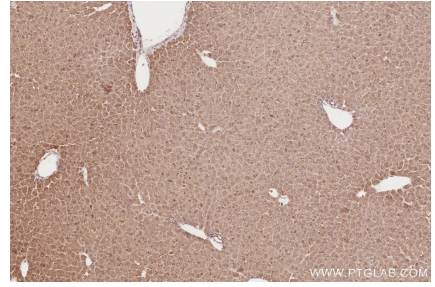
Selected Validation Data



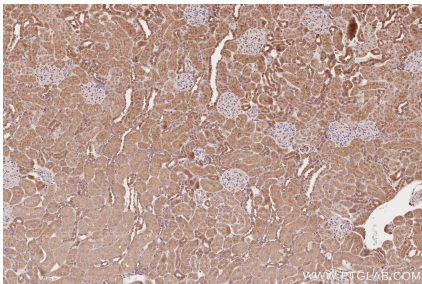
Immunohistochemical analysis of paraffin-embedded human placenta tissue slide using KHC2640 (RAB43 IHC Kit).



Immunohistochemical analysis of paraffin-embedded mouse kidney tissue slide using KHC2640 (RAB43 IHC Kit).



Immunohistochemical analysis of paraffin-embedded mouse liver tissue slide using KHC2640 (RAB43 IHC Kit).



Immunohistochemical analysis of paraffin-embedded rat kidney tissue slide using KHC2640 (RAB43 IHC Kit).