

# IHC*easy* SLC30A6/ZnT6 Ready-To-Use IHC Kit

Catalog Number: **KHC2583**

## General Information

**Sample type:**  
FFPE tissue

**Cited sample type:**

**Reactivity:**  
Human, Mouse, Rat

**Cited Reactivity:**

**Assay type:**  
Immunohistochemistry

**Primary antibody type:**  
Rabbit Polyclonal

**Secondary antibody type:**  
Polymer-HRP-Goat anti-Rabbit

## Kit Component

Component	Size	Concentration
Antigen Retrieval Buffer	100 mL	50×
Washing Buffer	100 mL ×2	20×
Blocking Buffer	5 mL	RTU
Primary Antibody	5 mL	RTU
Secondary Antibody	5 mL	RTU
Chromogen Component A	0.2 mL	RTU
Chromogen Component B	4 mL	RTU
Signal Enhancer	5 mL	RTU
Counter Staining Reagent	5 mL	RTU
Mounting Media	5 mL	RTU
Control Slide	1 slide (Optional)	FFPE
Datasheet	1 Copy	
Manual	1 Copy	

## Storage Instructions

All the reagents are stored at 2-8°C. The kit is stable for 6 months from the date of receipt.

## Background

ZnT6 (encoded by SLC30A6) is a member of zinc transporters. ZnT6 is localized on the membrane of the Golgi apparatus as well as cytoplasmic vesicles. It may function in transporting the cytoplasmic zinc into the Golgi apparatus as well as the vesicular compartment. Altered expression of ZnT6 may correlate to neural diseases including Alzheimer's disease.

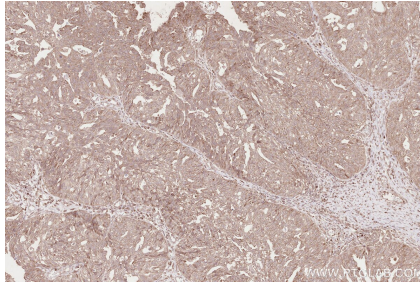
## Synonyms

SLC30A6,ZnT 6,ZnT6,ZnT-6

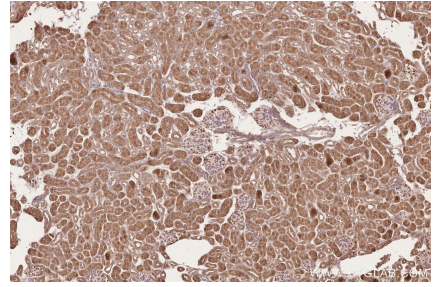
## Selected Validation Data



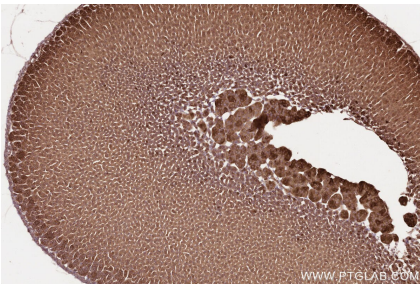
Immunohistochemical analysis of paraffin-embedded human stomach cancer tissue slide using KHC2583 (SLC30A6/ZNT6 IHC Kit).



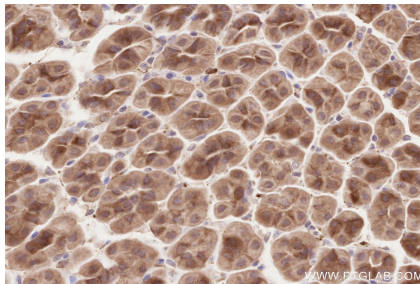
Immunohistochemical analysis of paraffin-embedded human ovary cancer tissue slide using KHC2583 (SLC30A6/ZNT6 IHC Kit).



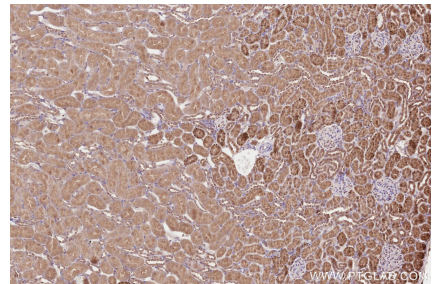
Immunohistochemical analysis of paraffin-embedded mouse kidney tissue slide using KHC2583 (SLC30A6/ZNT6 IHC Kit).



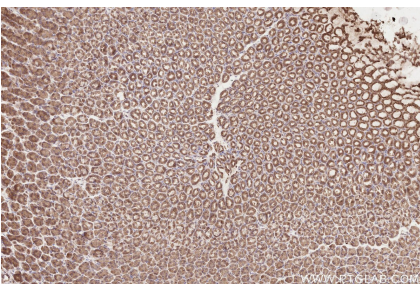
Immunohistochemical analysis of paraffin-embedded mouse adrenal gland tissue slide using KHC2583 (SLC30A6/ZNT6 IHC Kit).



Immunohistochemical analysis of paraffin-embedded mouse stomach tissue slide using KHC2583 (SLC30A6/ZNT6 IHC Kit).



Immunohistochemical analysis of paraffin-embedded rat kidney tissue slide using KHC2583 (SLC30A6/ZNT6 IHC Kit).



Immunohistochemical analysis of paraffin-embedded rat stomach tissue slide using KHC2583 (SLC30A6/ZNT6 IHC Kit).