

IHC*easy* CRY2 Ready-To-Use IHC Kit

Catalog Number: **KHC2530**

General Information

Sample type:
FFPE tissue

Cited sample type:

Reactivity:
Human, Mouse, Rat

Cited Reactivity:

Assay type:
Immunohistochemistry

Primary antibody type:
Rabbit Polyclonal

Secondary antibody type:
Polymer-HRP-Goat anti-Rabbit

Kit Component

Component	Size	Concentration
Antigen Retrieval Buffer	100 mL	50×
Washing Buffer	100 mL ×2	20×
Blocking Buffer	5 mL	RTU
Primary Antibody	5 mL	RTU
Secondary Antibody	5 mL	RTU
Chromogen Component A	0.2 mL	RTU
Chromogen Component B	4 mL	RTU
Signal Enhancer	5 mL	RTU
Counter Staining Reagent	5 mL	RTU
Mounting Media	5 mL	RTU
Control Slide	1 slide (Optional)	FFPE
Datasheet	1 Copy	
Manual	1 Copy	

Storage Instructions

All the reagents are stored at 2-8°C. The kit is stable for 6 months from the date of receipt.

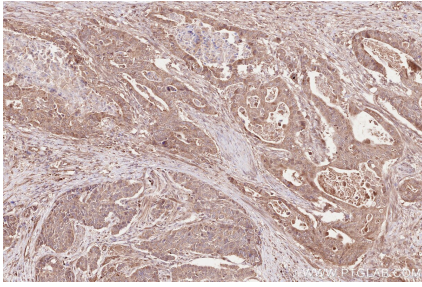
Background

Cryptochrome circadian clock 2 (CRY2) is a flavin adenine dinucleotide-binding protein that is a key component of the circadian core oscillator complex, which regulates the circadian clock. Loss of CRY2 stabilizes c-MYC and enhances cellular transformation. CRY2 can function as a co-factor for the SCF substrate adaptor FBXL3. Primary antibody in this kit recognizes both CRY1 and CRY2 due to the high homology.

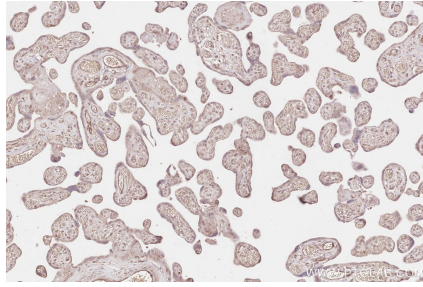
Synonyms

Cryptochrome 2,CRY 2,CRY2,Cryptochrome-2,HCRY2

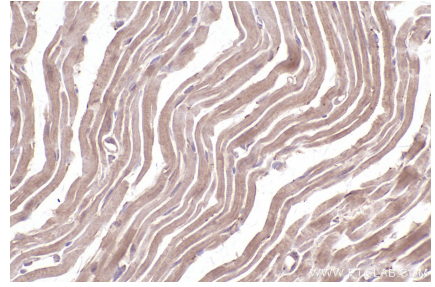
Selected Validation Data



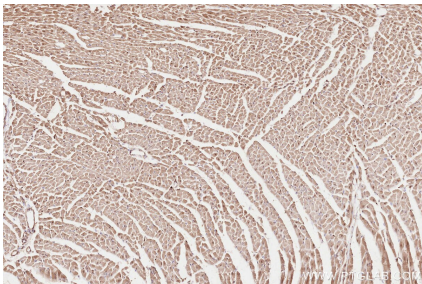
Immunohistochemical analysis of paraffin-embedded human stomach cancer tissue slide using KHC2530 (CRY2 IHC Kit).



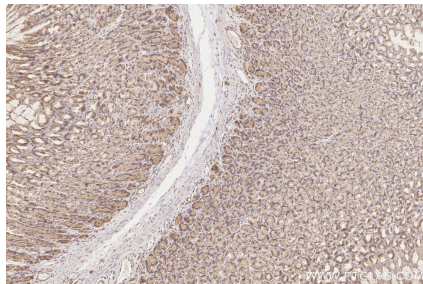
Immunohistochemical analysis of paraffin-embedded human placenta tissue slide using KHC2530 (CRY2 IHC Kit).



Immunohistochemical analysis of paraffin-embedded mouse heart tissue slide using KHC2530 (CRY2 IHC Kit).



Immunohistochemical analysis of paraffin-embedded rat heart tissue slide using KHC2530 (CRY2 IHC Kit).



Immunohistochemical analysis of paraffin-embedded rat stomach tissue slide using KHC2530 (CRY2 IHC Kit).