

IHC*easy* RAB11B Ready-To-Use IHC Kit

Catalog Number: **KHC2501**

General Information

Sample type:
FFPE tissue

Cited sample type:

Reactivity:
Human, Mouse, Rat

Cited Reactivity:

Assay type:
Immunohistochemistry

Primary antibody type:
Mouse Monoclonal

Secondary antibody type:
Polymer-HRP-Goat anti-Mouse

Kit Component

Component	Size	Concentration
Antigen Retrieval Buffer	100 mL	50×
Washing Buffer	100 mL ×2	20×
Blocking Buffer	5 mL	RTU
Primary Antibody	5 mL	RTU
Secondary Antibody	5 mL	RTU
Chromogen Component A	0.2 mL	RTU
Chromogen Component B	4 mL	RTU
Signal Enhancer	5 mL	RTU
Counter Staining Reagent	5 mL	RTU
Mounting Media	5 mL	RTU
Control Slide	1 slide (Optional)	FFPE
Datasheet	1 Copy	
Manual	1 Copy	

Storage Instructions

All the reagents are stored at 2-8°C. The kit is stable for 6 months from the date of receipt.

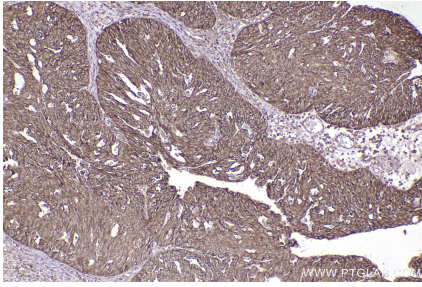
Background

RAB11B, also named as YPT3, belongs to the small GTPase superfamily and Rab family. RAB11B possesses GTPase activity.

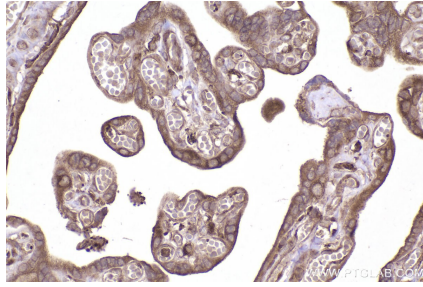
Synonyms

RAB11B, EC:3.6.5.2, GTP binding protein YPT3, GTP-bin

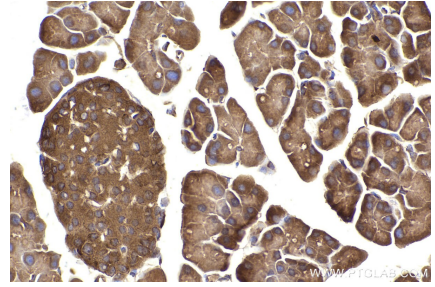
Selected Validation Data



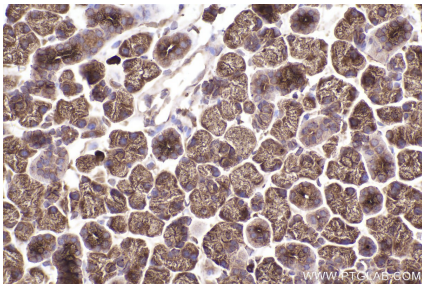
Immunohistochemical analysis of paraffin-embedded human ovary cancer tissue slide using KHC2501 (RAB11B IHC Kit).



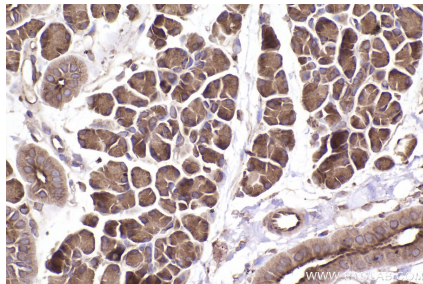
Immunohistochemical analysis of paraffin-embedded human placenta tissue slide using KHC2501 (RAB11B IHC Kit).



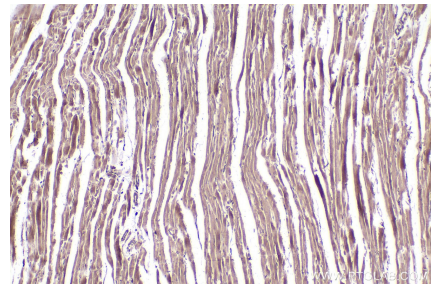
Immunohistochemical analysis of paraffin-embedded mouse pancreas tissue slide using KHC2501 (RAB11B IHC Kit).



Immunohistochemical analysis of paraffin-embedded mouse salivary gland tissue slide using KHC2501 (RAB11B IHC Kit).



Immunohistochemical analysis of paraffin-embedded rat salivary gland tissue slide using KHC2501 (RAB11B IHC Kit).



Immunohistochemical analysis of paraffin-embedded rat heart tissue slide using KHC2501 (RAB11B IHC Kit).