

IHC*easy* RAB35 Ready-To-Use IHC Kit

Catalog Number: **KHC2484**

General Information

Sample type:
FFPE tissue
Cited sample type:
Reactivity:
Human, Rat
Cited Reactivity:

Assay type:
Immunohistochemistry
Primary antibody type:
Rabbit Polyclonal
Secondary antibody type:
Polymer-HRP-Goat anti-Rabbit

Kit Component

Component	Size	Concentration
Antigen Retrieval Buffer	100 mL	50×
Washing Buffer	100 mL ×2	20×
Blocking Buffer	5 mL	RTU
Primary Antibody	5 mL	RTU
Secondary Antibody	5 mL	RTU
Chromogen Component A	0.2 mL	RTU
Chromogen Component B	4 mL	RTU
Signal Enhancer	5 mL	RTU
Counter Staining Reagent	5 mL	RTU
Mounting Media	5 mL	RTU
Control Slide	1 slide (Optional)	FFPE
Datasheet	1 Copy	
Manual	1 Copy	

Storage Instructions

All the reagents are stored at 2-8°C. The kit is stable for 6 months from the date of receipt.

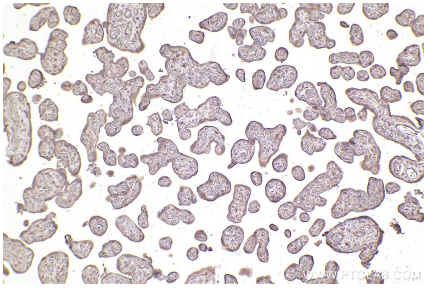
Background

RAB35 is a member of the small GTPase superfamily. Like the other Rab proteins, RAB35 has 2 consecutive cysteine residues at its C terminus, and this region is thought to be involved in membrane association. Rab35 is found on the cell surface and endosomes, where it has been proposed to play a role in recycling of the transferrin and other receptors.

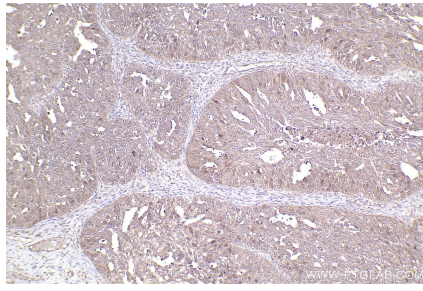
Synonyms

RAB35,GTP binding protein RAY,GTP-binding protein

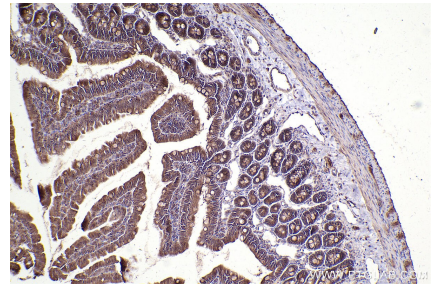
Selected Validation Data



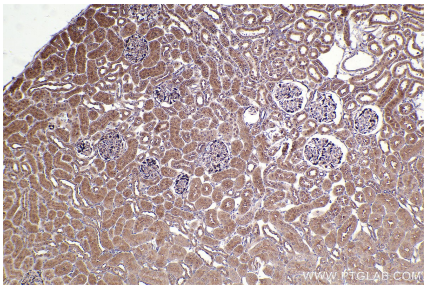
Immunohistochemical analysis of paraffin-embedded human placenta tissue slide using KHC2484 (RAB35 IHC Kit).



Immunohistochemical analysis of paraffin-embedded human ovary cancer tissue slide using KHC2484 (RAB35 IHC Kit).



Immunohistochemical analysis of paraffin-embedded rat small intestine tissue slide using KHC2484 (RAB35 IHC Kit).



Immunohistochemical analysis of paraffin-embedded rat kidney tissue slide using KHC2484 (RAB35 IHC Kit).