

IHC*easy* UBE2V1 Ready-To-Use IHC Kit

Catalog Number: **KHC2460**

General Information

Sample type:
FFPE tissue

Cited sample type:

Reactivity:
Human, Mouse

Cited Reactivity:

Assay type:
Immunohistochemistry

Primary antibody type:
Rabbit Polyclonal

Secondary antibody type:
Polymer-HRP-Goat anti-Rabbit

Kit Component

Component	Size	Concentration
Antigen Retrieval Buffer	100 mL	50×
Washing Buffer	100 mL ×2	20×
Blocking Buffer	5 mL	RTU
Primary Antibody	5 mL	RTU
Secondary Antibody	5 mL	RTU
Chromogen Component A	0.2 mL	RTU
Chromogen Component B	4 mL	RTU
Signal Enhancer	5 mL	RTU
Counter Staining Reagent	5 mL	RTU
Mounting Media	5 mL	RTU
Control Slide	1 slide (Optional)	FFPE
Datasheet	1 Copy	
Manual	1 Copy	

Storage Instructions

All the reagents are stored at 2-8°C. The kit is stable for 6 months from the date of receipt.

Background

UBE2V1 (Ubiquitin-conjugating enzyme E2 variant 1) is also named as CROC1, UBE2V, UEV1 and belongs to the ubiquitin-conjugating enzyme family. It has no ubiquitin ligase activity on its own and the UBE2V1-UBE2N heterodimer catalyzes the synthesis of non-canonical poly-ubiquitin chains that are linked through Lys-63. CROC1 transcripts in all human tissues examined, with highest levels in brain, skeletal muscle, and kidney.

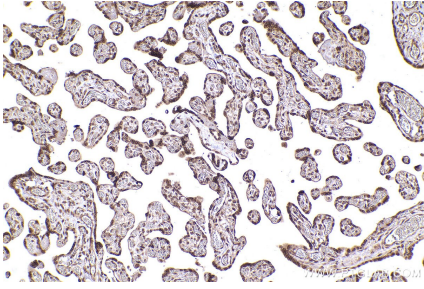
Synonyms

UBE2V1, CIR1, CROC 1, CROC1, CROC-1

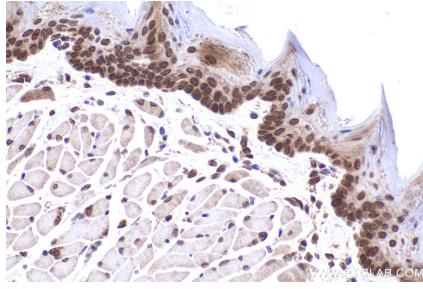
For technical support and original validation data for this product please contact:
T: 1 (888) 4PTGLAB (1-888-478-4522) (toll free in USA), or 1(312) 455-8498 (outside USA)
E: proteintech@ptglab.com
W: ptglab.com

This product is exclusively available under Proteintech Group brand and is not available to purchase from any other manufacturer.

Selected Validation Data



Immunohistochemical analysis of paraffin-embedded human placenta tissue slide using KHC2460 (UBE2V1 IHC Kit).



Immunohistochemical analysis of paraffin-embedded mouse tongue tissue slide using KHC2460 (UBE2V1 IHC Kit).