

IHCeasy GIT2 Ready-To-Use IHC Kit

Catalog Number: **KHC2451**

General Information

Sample type:
FFPE tissue
Cited sample type:
Reactivity:
Human
Cited Reactivity:

Assay type:
Immunohistochemistry
Primary antibody type:
Mouse Monoclonal
Secondary antibody type:
Polymer-HRP-Goat anti-Mouse

Kit Component

Component	Size	Concentration
Antigen Retrieval Buffer	100 mL	50×
Washing Buffer	100 mL × 2	20×
Blocking Buffer	5 mL	RTU
Primary Antibody	5 mL	RTU
Secondary Antibody	5 mL	RTU
Chromogen Component A	0.2 mL	RTU
Chromogen Component B	4 mL	RTU
Signal Enhancer	5 mL	RTU
Counter Staining Reagent	5 mL	RTU
Mounting Media	5 mL	RTU
Control Slide	1 slide (Optional)	FFPE
Datasheet	1 Copy	
Manual	1 Copy	

Storage Instructions

All the reagents are stored at 2-8°C. The kit is stable for 6 months from the date of receipt.

Background

G protein-coupled receptor kinase-interacting protein 2 (GIT2) is a signaling scaffold protein involved in the regulation of membrane trafficking, cytoskeletal structure, and G protein-coupled receptor internalization. It belongs to the GIT family that has been shown to involve in regulating emotional function, vascular development and mitochondrial biogenesis. Also GIT protein may have role in focal adhesion dynamics, cell migration and directing the spatial localization of signaling molecules such as MEK1 and ERK1/2.

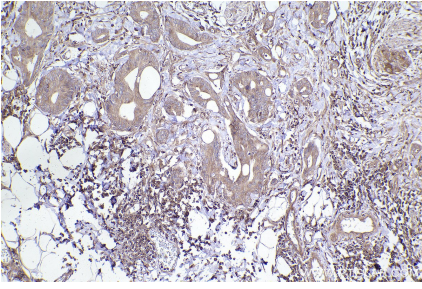
Synonyms

GIT2, ARF GAP, GIT2, ARF GTPase-activating protein GI

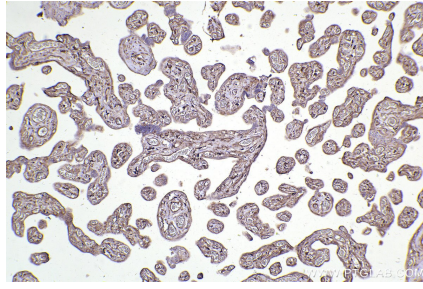
For technical support and original validation data for this product please contact:
T: 1 (888) 4PTGLAB (1-888-478-4522) (toll free in USA), or 1(312) 455-8498 (outside USA)
E: proteintech@ptglab.com
W: ptglab.com

This product is exclusively available under Proteintech Group brand and is not available to purchase from any other manufacturer.

Selected Validation Data



Immunohistochemical analysis of paraffin-embedded human rectal cancer tissue slide using KHC2451 (GIT2 IHC Kit).



Immunohistochemical analysis of paraffin-embedded human placenta tissue slide using KHC2451 (GIT2 IHC Kit).