

IHC*easy* EIF2B5 Ready-To-Use IHC Kit

Catalog Number: **KHC2418**

General Information

Sample type:
FFPE tissue

Cited sample type:

Reactivity:
Human, Rat

Cited Reactivity:

Assay type:
Immunohistochemistry

Primary antibody type:
Rabbit Polyclonal

Secondary antibody type:
Polymer-HRP-Goat anti-Rabbit

Kit Component

Component	Size	Concentration
Antigen Retrieval Buffer	100 mL	50×
Washing Buffer	100 mL ×2	20×
Blocking Buffer	5 mL	RTU
Primary Antibody	5 mL	RTU
Secondary Antibody	5 mL	RTU
Chromogen Component A	0.2 mL	RTU
Chromogen Component B	4 mL	RTU
Signal Enhancer	5 mL	RTU
Counter Staining Reagent	5 mL	RTU
Mounting Media	5 mL	RTU
Control Slide	1 slide (Optional)	FFPE
Datasheet	1 Copy	
Manual	1 Copy	

Storage Instructions

All the reagents are stored at 2-8°C. The kit is stable for 6 months from the date of receipt.

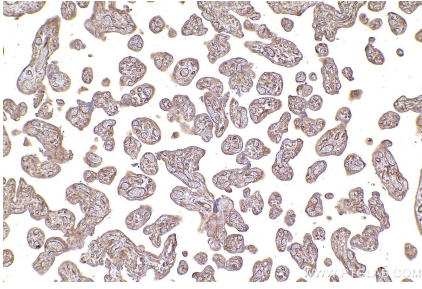
Background

EIF2B5 encodes translation initiation factor eIF-2B subunit epsilon protein. EIF2B5 mutations compromise the induction of GFAP-expressing astrocytes in VWM (vanishing white matter) leukodystrophy. The upregulation of EIF2B5 is associated with cancer such as human pulmonary adenocarcinoma cell and breast cancer.

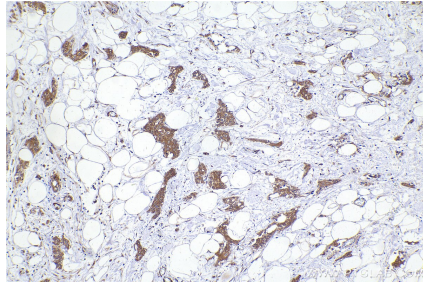
Synonyms

EIF2B5,CACH,CLE,EIF 2B,EIF2BE

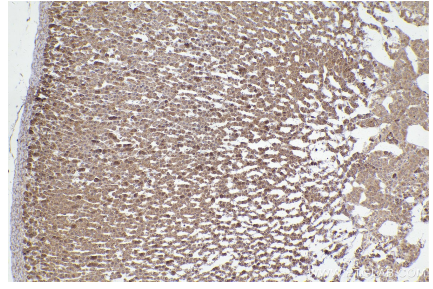
Selected Validation Data



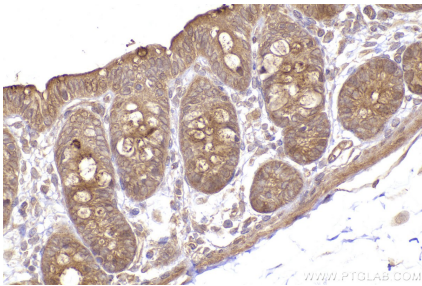
Immunohistochemical analysis of paraffin-embedded human placenta tissue slide using KHC2418 (EIF2B5 IHC Kit).



Immunohistochemical analysis of paraffin-embedded human urothelial carcinoma tissue slide using KHC2418 (EIF2B5 IHC Kit).



Immunohistochemical analysis of paraffin-embedded rat adrenal gland tissue slide using KHC2418 (EIF2B5 IHC Kit).



Immunohistochemical analysis of paraffin-embedded rat colon tissue slide using KHC2418 (EIF2B5 IHC Kit).