

IHC*easy* DLG1 Ready-To-Use IHC Kit

Catalog Number: **KHC2412**

General Information

Sample type:
FFPE tissue

Cited sample type:

Reactivity:
Human, Mouse, Rat

Cited Reactivity:

Assay type:
Immunohistochemistry

Primary antibody type:
Rabbit Polyclonal

Secondary antibody type:
Polymer-HRP-Goat anti-Rabbit

Kit Component

Component	Size	Concentration
Antigen Retrieval Buffer	100 mL	50×
Washing Buffer	100 mL ×2	20×
Blocking Buffer	5 mL	RTU
Primary Antibody	5 mL	RTU
Secondary Antibody	5 mL	RTU
Chromogen Component A	0.2 mL	RTU
Chromogen Component B	4 mL	RTU
Signal Enhancer	5 mL	RTU
Counter Staining Reagent	5 mL	RTU
Mounting Media	5 mL	RTU
Control Slide	1 slide (Optional)	FFPE
Datasheet	1 Copy	
Manual	1 Copy	

Storage Instructions

All the reagents are stored at 2-8°C. The kit is stable for 6 months from the date of receipt.

Background

DLG1, also named as SAP97, hDlg and DLGH1, belongs to the MAGUK family. It is essential multidomain scaffolding protein required for normal development. DLG1 may play a role in adherens junction assembly, signal transduction, cell proliferation, synaptogenesis and lymphocyte activation. It regulates the excitability of cardiac myocytes by modulating the functional expression of Kv4 channels. DLG1 is a functional regulator of Kv1.5 channel. The DLG1-MPP7 complex promotes epithelial cell polarity and tight junction formation.

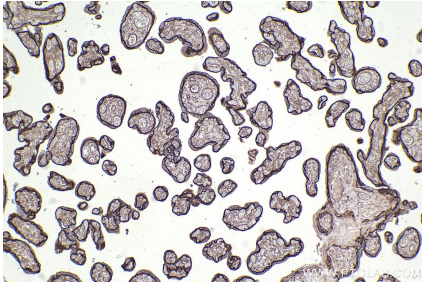
Synonyms

DLG1, Disks large homolog 1, DLGH1, hDlg, SAP 97

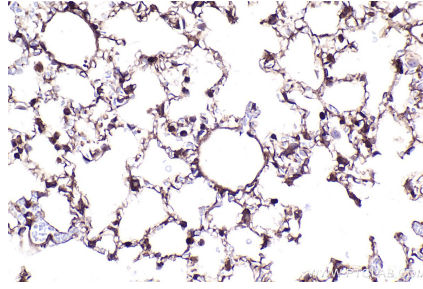
For technical support and original validation data for this product please contact:
T: 1 (888) 4PTGLAB (1-888-478-4522) (toll free in USA), or 1(312) 455-8498 (outside USA)
E: proteintech@ptglab.com
W: ptglab.com

This product is exclusively available under Proteintech Group brand and is not available to purchase from any other manufacturer.

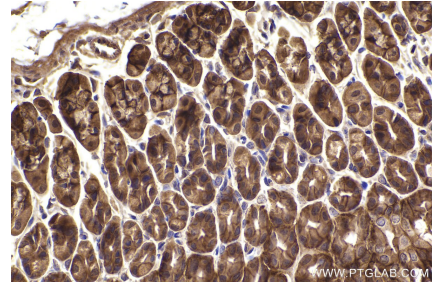
Selected Validation Data



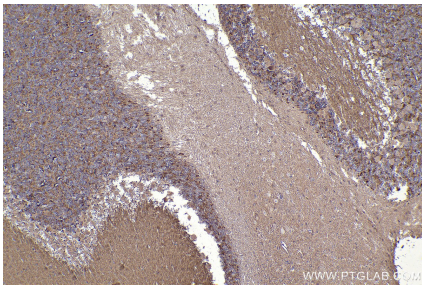
Immunohistochemical analysis of paraffin-embedded human placenta tissue slide using KHC2412 (DLG1 IHC Kit).



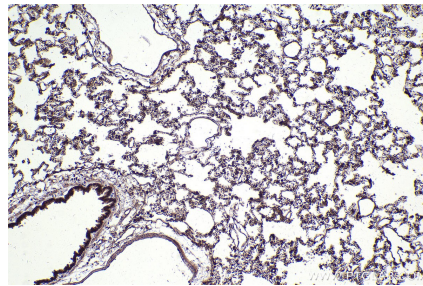
Immunohistochemical analysis of paraffin-embedded mouse lung tissue slide using KHC2412 (DLG1 IHC Kit).



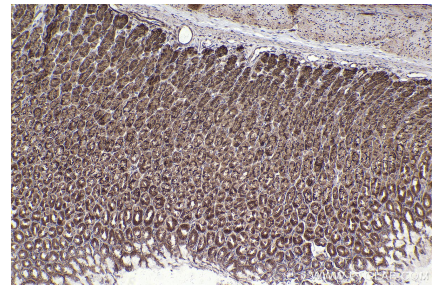
Immunohistochemical analysis of paraffin-embedded mouse stomach tissue slide using KHC2412 (DLG1 IHC Kit).



Immunohistochemical analysis of paraffin-embedded mouse cerebellum tissue slide using KHC2412 (DLG1 IHC Kit).



Immunohistochemical analysis of paraffin-embedded rat lung tissue slide using KHC2412 (DLG1 IHC Kit).



Immunohistochemical analysis of paraffin-embedded rat stomach tissue slide using KHC2412 (DLG1 IHC Kit).