

IHC*easy* FAP Ready-To-Use IHC Kit

Catalog Number: **KHC2409**

General Information

Sample type:
FFPE tissue

Cited sample type:

Reactivity:
Human, Mouse, Rat

Cited Reactivity:

Assay type:
Immunohistochemistry

Primary antibody type:
Rabbit Polyclonal

Secondary antibody type:
Polymer-HRP-Goat anti-Rabbit

Kit Component

Component	Size	Concentration
Antigen Retrieval Buffer	100 mL	50×
Washing Buffer	100 mL ×2	20×
Blocking Buffer	5 mL	RTU
Primary Antibody	5 mL	RTU
Secondary Antibody	5 mL	RTU
Chromogen Component A	0.2 mL	RTU
Chromogen Component B	4 mL	RTU
Signal Enhancer	5 mL	RTU
Counter Staining Reagent	5 mL	RTU
Mounting Media	5 mL	RTU
Control Slide	1 slide (Optional)	FFPE
Datasheet	1 Copy	
Manual	1 Copy	

Storage Instructions

All the reagents are stored at 2-8°C. The kit is stable for 6 months from the date of receipt.

Background

Fibroblast activation protein-alpha (FAP-alpha) is a cell surface glycoprotein serine protease, which can participate in extracellular matrix degradation and is involved in many cellular processes including tissue remodeling, fibrosis, wound healing, inflammation and tumor growth. FAP-alpha is a single transmembrane protein that locates the cytoplasm and plasma membrane. Immunohistochemical studies have shown that FAP-alpha is transiently expressed in certain normal fetal mesenchymal tissues but that normal adult tissues as well as malignant epithelial, neural, and hematopoietic cells are generally FAP-alpha-negative. However, most of the common types of epithelial cancers contain abundant FAP-alpha-reactive stromal fibroblasts.

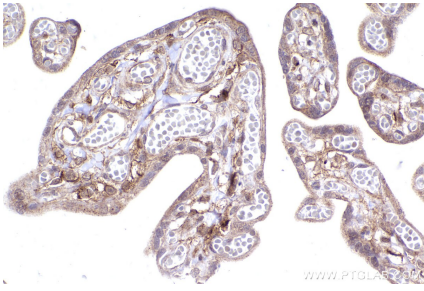
Synonyms

FAP,FAPA,170 kDa melanoma membrane-bound gelatinas

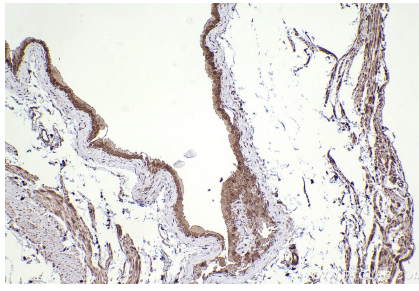
For technical support and original validation data for this product please contact:
T: 1 (888) 4PTGLAB (1-888-478-4522) (toll free in USA), or 1(312) 455-8498 (outside USA)
E: proteintech@ptglab.com
W: ptglab.com

This product is exclusively available under Proteintech Group brand and is not available to purchase from any other manufacturer.

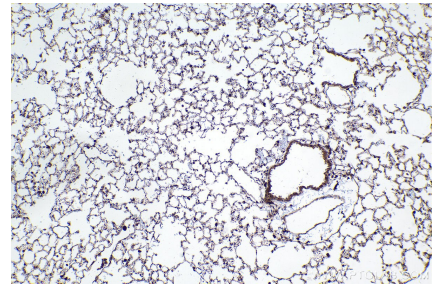
Selected Validation Data



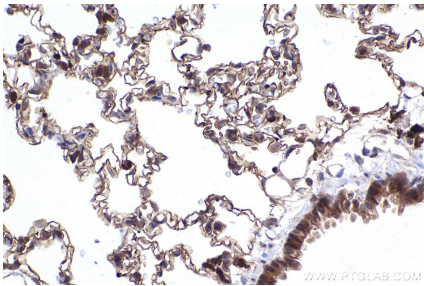
Immunohistochemical analysis of paraffin-embedded human placenta tissue slide using KHC2409 (FAP IHC Kit).



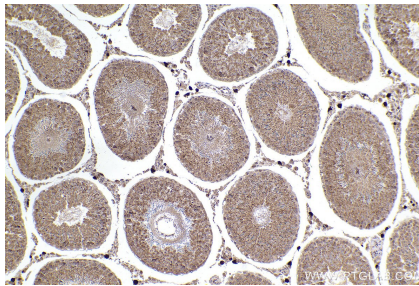
Immunohistochemical analysis of paraffin-embedded mouse bladder tissue slide using KHC2409 (FAP IHC Kit).



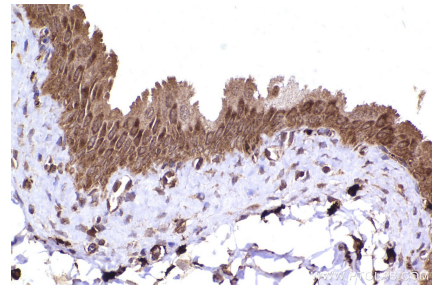
Immunohistochemical analysis of paraffin-embedded mouse lung tissue slide using KHC2409 (FAP IHC Kit).



Immunohistochemical analysis of paraffin-embedded rat lung tissue slide using KHC2409 (FAP IHC Kit).



Immunohistochemical analysis of paraffin-embedded rat testis tissue slide using KHC2409 (FAP IHC Kit).



Immunohistochemical analysis of paraffin-embedded rat bladder tissue slide using KHC2409 (FAP IHC Kit).