

# IHC*easy* TYRO3 Ready-To-Use IHC Kit

Catalog Number: **KHC2395**

## General Information

**Sample type:**  
FFPE tissue

**Cited sample type:**

**Reactivity:**  
Human, Mouse, Rat

**Cited Reactivity:**

**Assay type:**  
Immunohistochemistry

**Primary antibody type:**  
Rabbit Polyclonal

**Secondary antibody type:**  
Polymer-HRP-Goat anti-Rabbit

## Kit Component

Component	Size	Concentration
Antigen Retrieval Buffer	100 mL	50×
Washing Buffer	100 mL ×2	20×
Blocking Buffer	5 mL	RTU
Primary Antibody	5 mL	RTU
Secondary Antibody	5 mL	RTU
Chromogen Component A	0.2 mL	RTU
Chromogen Component B	4 mL	RTU
Signal Enhancer	5 mL	RTU
Counter Staining Reagent	5 mL	RTU
Mounting Media	5 mL	RTU
Control Slide	1 slide (Optional)	FFPE
Datasheet	1 Copy	
Manual	1 Copy	

## Storage Instructions

All the reagents are stored at 2-8°C. The kit is stable for 6 months from the date of receipt.

## Background

TYRO3 has a structure includes a cytoplasmic domain and an extracellular ligand binding region. And ligand binding at the cell surface induces dimerization and autophosphorylation of TYRO3 on its intracellular domain that provides docking sites for downstream signaling molecules. TYRO3 is associated with many physiological processes including cell survival, migration and differentiation. It has been reported that TYRO3 can be expressed in various regions of the mammalian central nervous system.

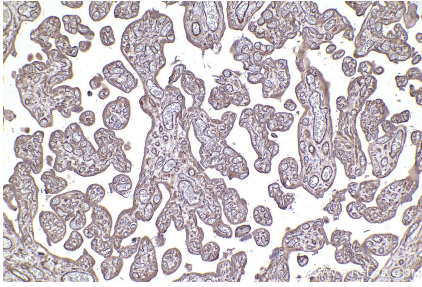
## Synonyms

Sky, RSE, EC:2.7.10.1, Dtk, BYK

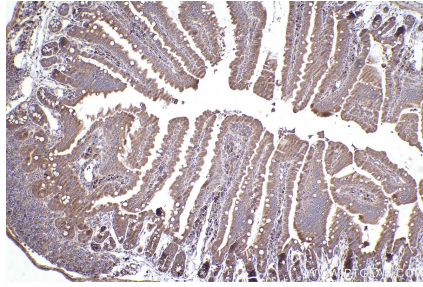
For technical support and original validation data for this product please contact:  
T: 1 (888) 4PTGLAB (1-888-478-4522) (toll free in USA), or 1(312) 455-8498 (outside USA)  
E: [proteintech@ptglab.com](mailto:proteintech@ptglab.com)  
W: [ptglab.com](http://ptglab.com)

This product is exclusively available under Proteintech Group brand and is not available to purchase from any other manufacturer.

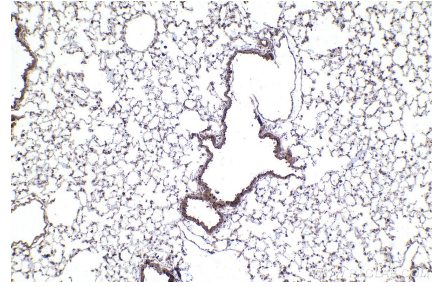
## Selected Validation Data



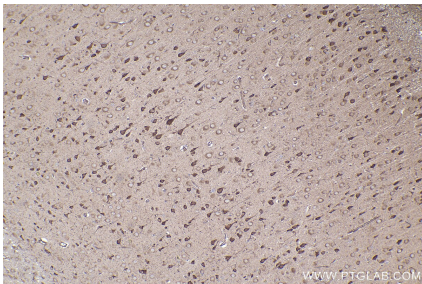
Immunohistochemical analysis of paraffin-embedded human placenta tissue slide using KHC2395 (TYRO3 IHC Kit).



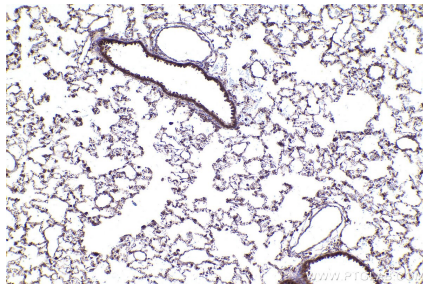
Immunohistochemical analysis of paraffin-embedded mouse small intestine tissue slide using KHC2395 (TYRO3 IHC Kit).



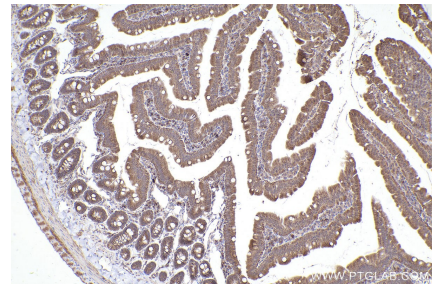
Immunohistochemical analysis of paraffin-embedded mouse lung tissue slide using KHC2395 (TYRO3 IHC Kit).



Immunohistochemical analysis of paraffin-embedded rat brain tissue slide using KHC2395 (TYRO3 IHC Kit).



Immunohistochemical analysis of paraffin-embedded rat lung tissue slide using KHC2395 (TYRO3 IHC Kit).



Immunohistochemical analysis of paraffin-embedded rat small intestine tissue slide using KHC2395 (TYRO3 IHC Kit).