

IHC*easy* SRPK2 Ready-To-Use IHC Kit

Catalog Number: **KHC2364**

General Information

Sample type:
FFPE tissue

Cited sample type:

Reactivity:
Human, Mouse, Rat

Cited Reactivity:

Assay type:
Immunohistochemistry

Primary antibody type:
Rabbit Polyclonal

Secondary antibody type:
Polymer-HRP-Goat anti-Rabbit

Kit Component

Component	Size	Concentration
Antigen Retrieval Buffer	100 mL	50×
Washing Buffer	100 mL ×2	20×
Blocking Buffer	5 mL	RTU
Primary Antibody	5 mL	RTU
Secondary Antibody	5 mL	RTU
Chromogen Component A	0.2 mL	RTU
Chromogen Component B	4 mL	RTU
Signal Enhancer	5 mL	RTU
Counter Staining Reagent	5 mL	RTU
Mounting Media	5 mL	RTU
Control Slide	1 slide (Optional)	FFPE
Datasheet	1 Copy	
Manual	1 Copy	

Storage Instructions

All the reagents are stored at 2-8°C. The kit is stable for 6 months from the date of receipt.

Background

SRPK2, also named as serine/arginine protein kinase 2 and SFRSK2, belongs to SR protein-specific kinase family which phosphorylate the serine/arginine domain containing proteins in the nuclear speckles to mediate pre-mRNA splicing. In addition to its major role as kinase for the phosphorylation of SR proteins, SRPK2 is involved in cell cycle regulation and cell apoptosis. SRPK2 promotes the proliferation and migration of the colon cancer cells. It has been reported to be regulated in several cancer types.

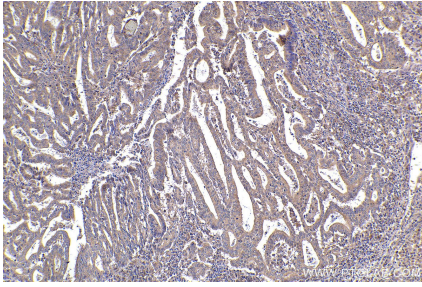
Synonyms

SR-protein-specific kinase 2, SR protein specific kinase 2, SFRSK2, SFRS protein kinase 2, Serine/arginine-rich protein-specific kinase 2

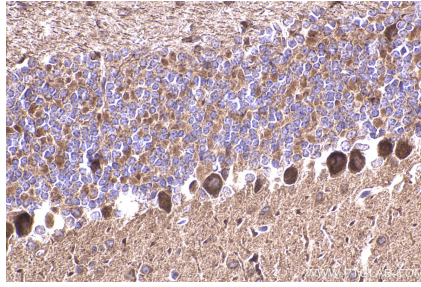
For technical support and original validation data for this product please contact:
T: 1 (888) 4PTGLAB (1-888-478-4522) (toll free in USA), or 1(312) 455-8498 (outside USA)
E: proteintech@ptglab.com
W: ptglab.com

This product is exclusively available under Proteintech Group brand and is not available to purchase from any other manufacturer.

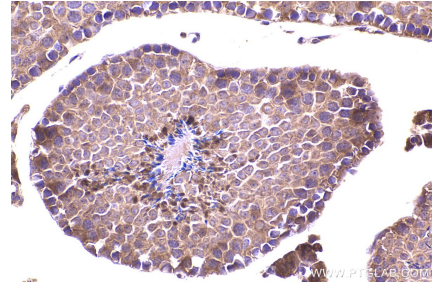
Selected Validation Data



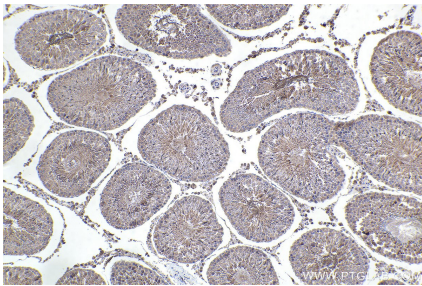
Immunohistochemical analysis of paraffin-embedded human endometrial cancer tissue slide using KHC2364 (SRPK2 IHC Kit).



Immunohistochemical analysis of paraffin-embedded mouse cerebellum tissue slide using KHC2364 (SRPK2 IHC Kit).



Immunohistochemical analysis of paraffin-embedded mouse testis tissue slide using KHC2364 (SRPK2 IHC Kit).



Immunohistochemical analysis of paraffin-embedded rat testis tissue slide using KHC2364 (SRPK2 IHC Kit).