

# IHC*easy* RAB11A/B Ready-To-Use IHC Kit

Catalog Number: **KHC2351**

## General Information

**Sample type:**  
FFPE tissue

**Cited sample type:**

**Reactivity:**  
Human, Mouse

**Cited Reactivity:**

**Assay type:**  
Immunohistochemistry

**Primary antibody type:**  
Rabbit Polyclonal

**Secondary antibody type:**  
Polymer-HRP-Goat anti-Rabbit

## Kit Component

Component	Size	Concentration
Antigen Retrieval Buffer	100 mL	50×
Washing Buffer	100 mL ×2	20×
Blocking Buffer	5 mL	RTU
Primary Antibody	5 mL	RTU
Secondary Antibody	5 mL	RTU
Chromogen Component A	0.2 mL	RTU
Chromogen Component B	4 mL	RTU
Signal Enhancer	5 mL	RTU
Counter Staining Reagent	5 mL	RTU
Mounting Media	5 mL	RTU
Control Slide	1 slide (Optional)	FFPE
Datasheet	1 Copy	
Manual	1 Copy	

## Storage Instructions

All the reagents are stored at 2-8°C. The kit is stable for 6 months from the date of receipt.

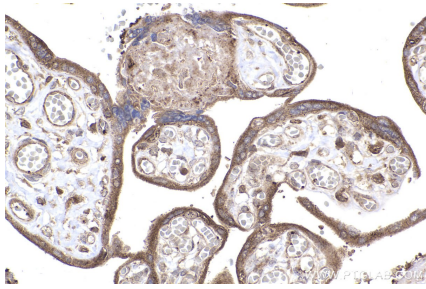
## Background

RAB11 has two isoform genes RAB11A(YL8) and RAB11B(YPT3), and belongs to the small GTPase superfamily and Rab family. It regulates endocytic recycling. RAB11 may exert its functions by interacting with multiple effector proteins in different complexes. It acts as a major regulator of membrane delivery during cytokinesis. RAB11 regulates the recycling of FCGRT (receptor of Fc region of monomeric Ig G) to basolateral membranes. Primary antibody in this kit recognizes both RAB11A and RAB11B.

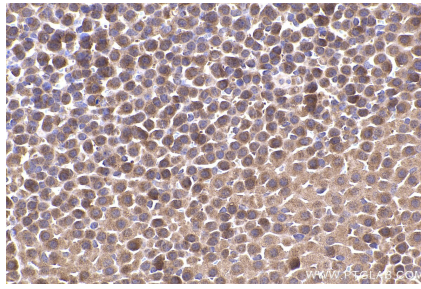
## Synonyms

RAB11, Rab 11, RAB11A, Ras related protein Rab 11A, Rab-11

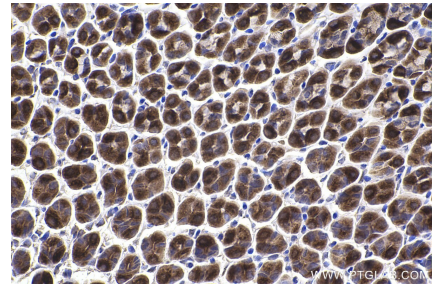
## Selected Validation Data



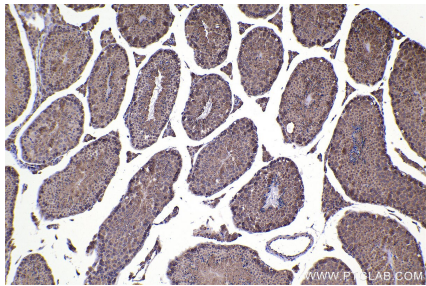
Immunohistochemical analysis of paraffin-embedded human placenta tissue slide using KHC2351 (RAB11A/B IHC Kit).



Immunohistochemical analysis of paraffin-embedded mouse adrenal gland tissue slide using KHC2351 (RAB11A/B IHC Kit).



Immunohistochemical analysis of paraffin-embedded mouse stomach tissue slide using KHC2351 (RAB11A/B IHC Kit).



Immunohistochemical analysis of paraffin-embedded mouse testis tissue slide using KHC2351 (RAB11A/B IHC Kit).