

IHC*easy* EIF5 Ready-To-Use IHC Kit

Catalog Number: **KHC2327**

General Information

Sample type:
FFPE tissue

Cited sample type:

Reactivity:
Human, Mouse, Rat

Cited Reactivity:

Assay type:
Immunohistochemistry

Primary antibody type:
Rabbit Polyclonal

Secondary antibody type:
Polymer-HRP-Goat anti-Rabbit

Kit Component

Component	Size	Concentration
Antigen Retrieval Buffer	100 mL	50×
Washing Buffer	100 mL ×2	20×
Blocking Buffer	5 mL	RTU
Primary Antibody	5 mL	RTU
Secondary Antibody	5 mL	RTU
Chromogen Component A	0.2 mL	RTU
Chromogen Component B	4 mL	RTU
Signal Enhancer	5 mL	RTU
Counter Staining Reagent	5 mL	RTU
Mounting Media	5 mL	RTU
Control Slide	1 slide (Optional)	FFPE
Datasheet	1 Copy	
Manual	1 Copy	

Storage Instructions

All the reagents are stored at 2-8°C. The kit is stable for 6 months from the date of receipt.

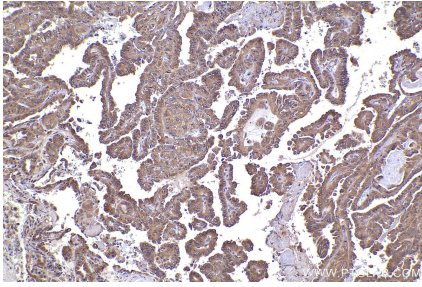
Background

Eukaryotic translation initiation factor 5, also named as EIF5, is a 431 amino acid protein, which contains one W2 domain and belongs to the eIF-2-beta/eIF-5 family. EIF5 catalyzes the hydrolysis of GTP bound to the 40S ribosomal initiation complex with the subsequent joining of a 60S ribosomal subunit resulting in the release of eIF-2 and the guanine nucleotide. EIF5 plays multiple roles in translation initiation.

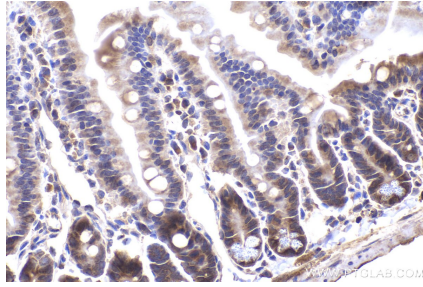
Synonyms

eIF-5, EIF 5A, eIF 5

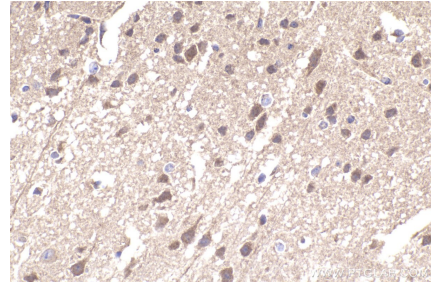
Selected Validation Data



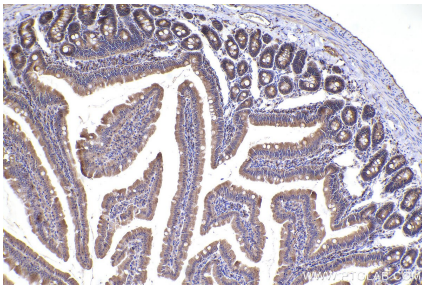
Immunohistochemical analysis of paraffin-embedded human thyroid cancer tissue slide using KHC2327 (EIF5 IHC Kit).



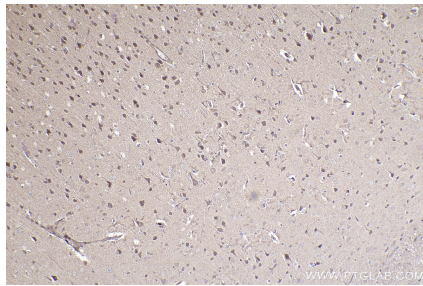
Immunohistochemical analysis of paraffin-embedded mouse small intestine tissue slide using KHC2327 (EIF5 IHC Kit).



Immunohistochemical analysis of paraffin-embedded mouse brain tissue slide using KHC2327 (EIF5 IHC Kit).



Immunohistochemical analysis of paraffin-embedded rat small intestine tissue slide using KHC2327 (EIF5 IHC Kit).



Immunohistochemical analysis of paraffin-embedded rat brain tissue slide using KHC2327 (EIF5 IHC Kit).