

IHC*easy* HSPA2 Ready-To-Use IHC Kit

Catalog Number: **KHC2325**

General Information

Sample type:
FFPE tissue

Cited sample type:

Reactivity:
Human, Mouse, Rat

Cited Reactivity:

Assay type:
Immunohistochemistry

Primary antibody type:
Mouse Monoclonal

Secondary antibody type:
Polymer-HRP-Goat anti-Mouse

Kit Component

Component	Size	Concentration
Antigen Retrieval Buffer	100 mL	50×
Washing Buffer	100 mL ×2	20×
Blocking Buffer	5 mL	RTU
Primary Antibody	5 mL	RTU
Secondary Antibody	5 mL	RTU
Chromogen Component A	0.2 mL	RTU
Chromogen Component B	4 mL	RTU
Signal Enhancer	5 mL	RTU
Counter Staining Reagent	5 mL	RTU
Mounting Media	5 mL	RTU
Control Slide	1 slide (Optional)	FFPE
Datasheet	1 Copy	
Manual	1 Copy	

Storage Instructions

All the reagents are stored at 2-8°C. The kit is stable for 6 months from the date of receipt.

Background

Human HSPA2 is a member of the HSPA (HSP70) family of heat-shock proteins, encoded by the gene originally described as testis-specific. Recently, it has been reported that HSPA2 can be also expressed in human somatic tissues in a cell-type specific manner. HSPA2 is a cytosol/nuclear protein able to translocate between cytoplasm and nucleus. HSPA2 is involved in sperm maturity, function and fertility. Aberrant expression of HSPA2 in testes has been connected with male infertility. Recently, HSPA2 has attracted increased interest due to its possible involvement in carcinogenesis of non-testicular tissues.

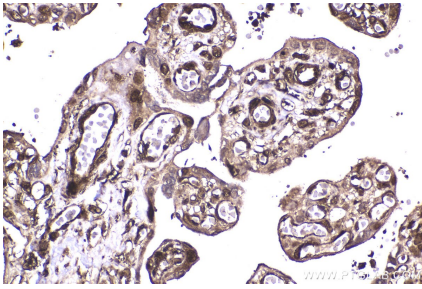
Synonyms

HSP70 2, Heat shock-related 70 kDa protein 2, Heat shock protein family A member 2, Heat shock 70 kDa protein 2

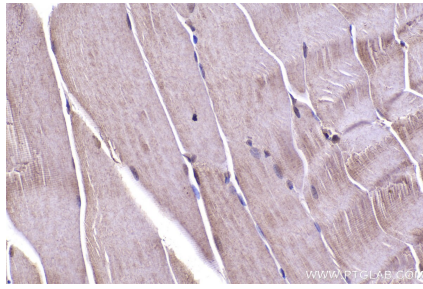
For technical support and original validation data for this product please contact:
T: 1 (888) 4PTGLAB (1-888-478-4522) (toll free in USA), or 1(312) 455-8498 (outside USA)
E: proteintech@ptglab.com
W: ptglab.com

This product is exclusively available under Proteintech Group brand and is not available to purchase from any other manufacturer.

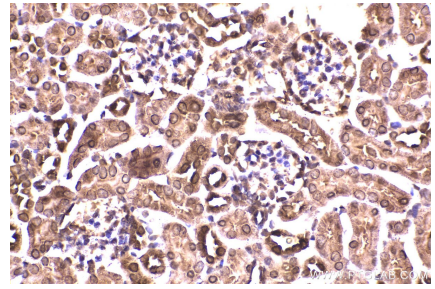
Selected Validation Data



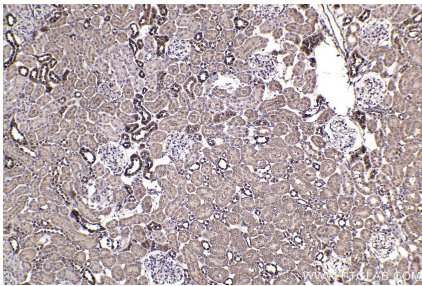
Immunohistochemical analysis of paraffin-embedded human placenta tissue slide using KHC2325 (HSPA2 IHC Kit).



Immunohistochemical analysis of paraffin-embedded mouse skeletal muscle tissue slide using KHC2325 (HSPA2 IHC Kit).



Immunohistochemical analysis of paraffin-embedded mouse kidney tissue slide using KHC2325 (HSPA2 IHC Kit).



Immunohistochemical analysis of paraffin-embedded rat kidney tissue slide using KHC2325 (HSPA2 IHC Kit).