

IHC*easy* NEK2 Ready-To-Use IHC Kit

Catalog Number: **KHC2307**

General Information

Sample type:
FFPE tissue

Cited sample type:

Reactivity:
Human, Mouse, Rat

Cited Reactivity:

Assay type:
Immunohistochemistry

Primary antibody type:
Rabbit Polyclonal

Secondary antibody type:
Polymer-HRP-Goat anti-Rabbit

Kit Component

Component	Size	Concentration
Antigen Retrieval Buffer	100 mL	50×
Washing Buffer	100 mL × 2	20×
Blocking Buffer	5 mL	RTU
Primary Antibody	5 mL	RTU
Secondary Antibody	5 mL	RTU
Chromogen Component A	0.2 mL	RTU
Chromogen Component B	4 mL	RTU
Signal Enhancer	5 mL	RTU
Counter Staining Reagent	5 mL	RTU
Mounting Media	5 mL	RTU
Control Slide	1 slide (Optional)	FFPE
Datasheet	1 Copy	
Manual	1 Copy	

Storage Instructions

All the reagents are stored at 2-8°C. The kit is stable for 6 months from the date of receipt.

Background

NEK2, also named as HSPK 21, belongs to the NEK family. NEK2 is well recognized as a multifunctional protein with roles in cell cycle regulation, such as centrosome duplication and separation, microtubule stabilization, kinetochore attachment and spindle assembly checkpoint. NEK2 is highly expressed in several cancer types, such as cholangiocarcinoma, breast, colorectal, and pancreatic cancer. NEK2 in mammals has three splice variants: NEK2A, NEK2B, and NEK2C. NEK2A is evenly distributed within the nuclei and cytoplasm, while NEK2B is mainly distributed in the cytoplasm, and NEK2C is mainly distributed in the nuclear region. As NEK2A, NEK2B and NEK2C exhibit overlapping or identical substrate usage, these variants are collectively referred to here as NEK2.

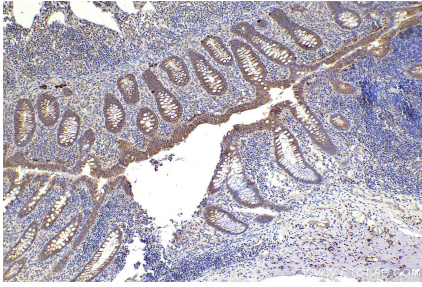
Synonyms

NimA like protein kinase 1, Never in mitosis A-related kinase 2, NEK2A, HsPK21, HSPK 21

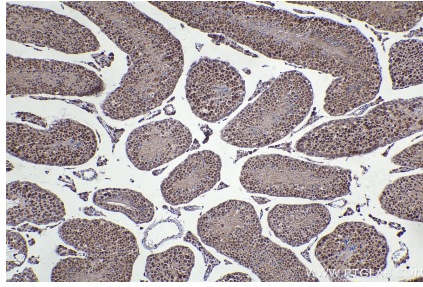
For technical support and original validation data for this product please contact:
T: 1 (888) 4PTGLAB (1-888-478-4522) (toll free in USA), or 1(312) 455-8498 (outside USA)
E: proteintech@ptglab.com
W: ptglab.com

This product is exclusively available under Proteintech Group brand and is not available to purchase from any other manufacturer.

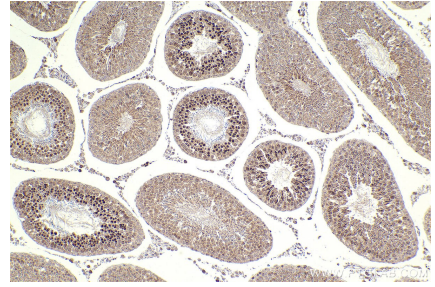
Selected Validation Data



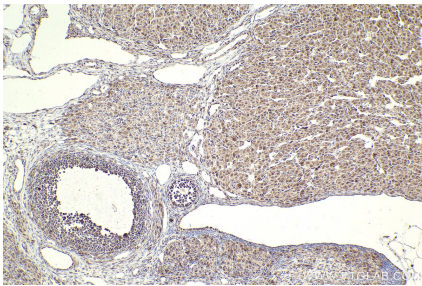
Immunohistochemical analysis of paraffin-embedded human appendicitis tissue slide using KHC2307 (NEK2 IHC Kit).



Immunohistochemical analysis of paraffin-embedded mouse testis tissue slide using KHC2307 (NEK2 IHC Kit).



Immunohistochemical analysis of paraffin-embedded rat testis tissue slide using KHC2307 (NEK2 IHC Kit).



Immunohistochemical analysis of paraffin-embedded rat ovary tissue slide using KHC2307 (NEK2 IHC Kit).