

# IHC*easy* LIG3 Ready-To-Use IHC Kit

Catalog Number: **KHC2294**

## General Information

**Sample type:**  
FFPE tissue

**Cited sample type:**

**Reactivity:**  
Human, Mouse, Rat

**Cited Reactivity:**

**Assay type:**  
Immunohistochemistry

**Primary antibody type:**  
Rabbit Polyclonal

**Secondary antibody type:**  
Polymer-HRP-Goat anti-Rabbit

## Kit Component

Component	Size	Concentration
Antigen Retrieval Buffer	100 mL	50×
Washing Buffer	100 mL × 2	20×
Blocking Buffer	5 mL	RTU
Primary Antibody	5 mL	RTU
Secondary Antibody	5 mL	RTU
Chromogen Component A	0.2 mL	RTU
Chromogen Component B	4 mL	RTU
Signal Enhancer	5 mL	RTU
Counter Staining Reagent	5 mL	RTU
Mounting Media	5 mL	RTU
Control Slide	1 slide (Optional)	FFPE
Datasheet	1 Copy	
Manual	1 Copy	

## Storage Instructions

All the reagents are stored at 2-8°C. The kit is stable for 6 months from the date of receipt.

## Background

DNA ligase 3 is an enzyme that in humans is encoded by the LIG3 gene. The human LIG3 gene encodes ATP-dependent DNA ligases that seal interruptions in the phosphodiester backbone of duplex DNA. There are three families of ATP-dependent DNA ligases in eukaryotes. These enzymes utilize the same three step reaction mechanism; 1 formation of a covalent enzyme-adenylate intermediate; 2 transfer of the adenylate group to the 5' phosphate terminus of a DNA nick; 3 phosphodiester bond formation. Unlike LIG1 and LIG4 family members that are found in almost all eukaryotes, LIG3 family members are less widely distributed. The LIG3 gene encodes several distinct DNA ligase species by alternative translation initiation and alternative splicing mechanisms.

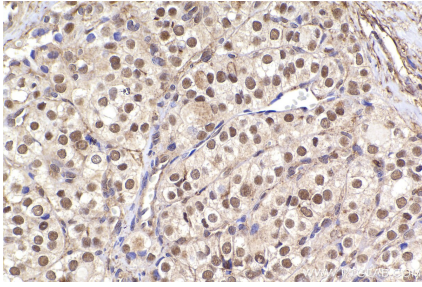
## Synonyms

ligase III, DNA, ATP dependent, LIG2, EC:6.5.1.1, DNA ligase III, DNA ligase 3

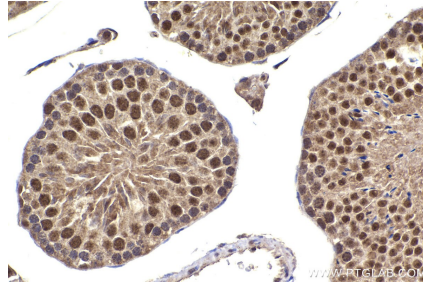
For technical support and original validation data for this product please contact:  
T: 1 (888) 4PTGLAB (1-888-478-4522) (toll free in USA), or 1(312) 455-8498 (outside USA)  
E: [proteintech@ptglab.com](mailto:proteintech@ptglab.com)  
W: [ptglab.com](http://ptglab.com)

This product is exclusively available under Proteintech Group brand and is not available to purchase from any other manufacturer.

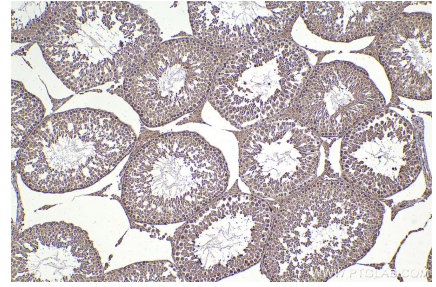
## Selected Validation Data



Immunohistochemical analysis of paraffin-embedded human thyroid cancer tissue slide using KHC2294 (LIG3 IHC Kit).



Immunohistochemical analysis of paraffin-embedded mouse testis tissue slide using KHC2294 (LIG3 IHC Kit).



Immunohistochemical analysis of paraffin-embedded rat testis tissue slide using KHC2294 (LIG3 IHC Kit).