

# IHC*easy* CSNK1D Ready-To-Use IHC Kit

Catalog Number: **KHC2284**

## General Information

**Sample type:**  
FFPE tissue

**Cited sample type:**

**Reactivity:**  
Human, Mouse, Rat

**Cited Reactivity:**

**Assay type:**  
Immunohistochemistry

**Primary antibody type:**  
Rabbit Polyclonal

**Secondary antibody type:**  
Polymer-HRP-Goat anti-Rabbit

## Kit Component

Component	Size	Concentration
Antigen Retrieval Buffer	100 mL	50×
Washing Buffer	100 mL ×2	20×
Blocking Buffer	5 mL	RTU
Primary Antibody	5 mL	RTU
Secondary Antibody	5 mL	RTU
Chromogen Component A	0.2 mL	RTU
Chromogen Component B	4 mL	RTU
Signal Enhancer	5 mL	RTU
Counter Staining Reagent	5 mL	RTU
Mounting Media	5 mL	RTU
Control Slide	1 slide (Optional)	FFPE
Datasheet	1 Copy	
Manual	1 Copy	

## Storage Instructions

All the reagents are stored at 2-8°C. The kit is stable for 6 months from the date of receipt.

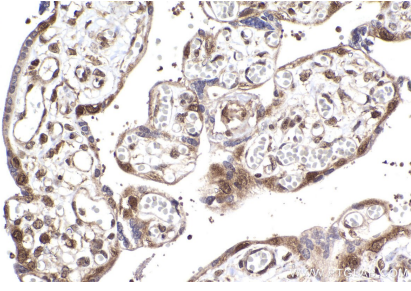
## Background

CSNK1D(casein kinase I isoform delta) is also named as HCKID, CK1d and belongs to the casein kinase I subfamily. CKI is a ubiquitous enzyme which has been found in the cytosol, associated with membranes, and in the nucleus. It can phosphorylate a large number of cytosolic, membrane-associated, and nuclear proteins. CSNK1D is found to be associated generally with granulovacuolar bodies and tau-containing neurofibrillary tangles in AD, DS, PSP, PDC, PPND, and controls, and Pick bodies and ballooned neurons in PiD.

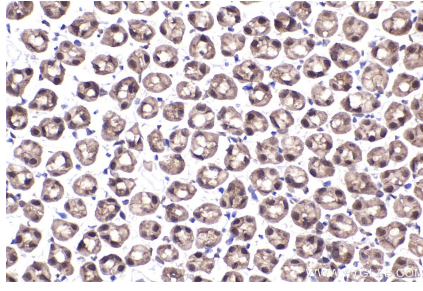
## Synonyms

Casein Kinase 1 delta,casein kinase 1, delta,CK1d,

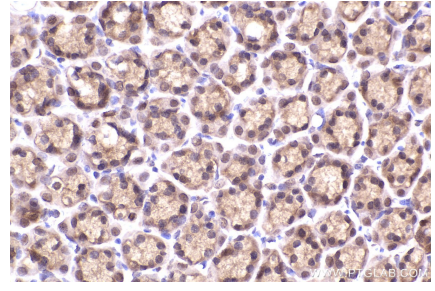
## Selected Validation Data



Immunohistochemical analysis of paraffin-embedded human placenta tissue slide using KHC2284 (CSNK1D IHC Kit).



Immunohistochemical analysis of paraffin-embedded mouse stomach tissue slide using KHC2284 (CSNK1D IHC Kit).



Immunohistochemical analysis of paraffin-embedded rat stomach tissue slide using KHC2284 (CSNK1D IHC Kit).