

IHC*easy* TRAPA/SSR1 Ready-To-Use IHC Kit

Catalog Number: **KHC2264**

General Information

Sample type:
FFPE tissue

Cited sample type:

Reactivity:
Human, Mouse, Rat

Cited Reactivity:

Assay type:
Immunohistochemistry

Primary antibody type:
Mouse Monoclonal

Secondary antibody type:
Polymer-HRP-Goat anti-Mouse

Kit Component

Component	Size	Concentration
Antigen Retrieval Buffer	100 mL	50×
Washing Buffer	100 mL × 2	20×
Blocking Buffer	5 mL	RTU
Primary Antibody	5 mL	RTU
Secondary Antibody	5 mL	RTU
Chromogen Component A	0.2 mL	RTU
Chromogen Component B	4 mL	RTU
Signal Enhancer	5 mL	RTU
Counter Staining Reagent	5 mL	RTU
Mounting Media	5 mL	RTU
Control Slide	1 slide (Optional)	FFPE
Datasheet	1 Copy	
Manual	1 Copy	

Storage Instructions

All the reagents are stored at 2-8°C. The kit is stable for 6 months from the date of receipt.

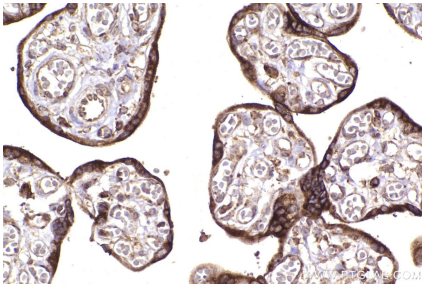
Background

TRAPA (translocon-associated protein subunit alpha), also known as SSR1 (signal sequence receptor subunit alpha), is a 34-kDa single-spanning membrane glycoprotein of the endoplasmic reticulum (ER). It is a part of the tetrameric TRAP complex (TRAP-alpha, TRAP-beta, TRAP-delta and TRAP-gamma) which functions in regulating the retention of ER resident proteins. The TRAP complex is also involved in endoplasmic reticulum-associated degradation (ERAD).

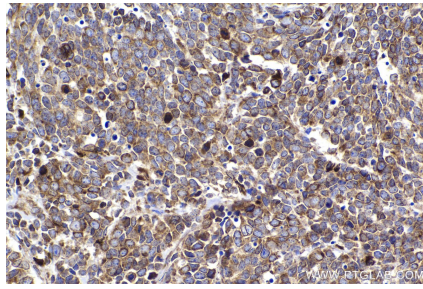
For technical support and original validation data for this product please contact:
T: 1 (888) 4PTGLAB (1-888-478-4522) (toll free in USA), or 1(312) 455-8498 (outside USA)
E: proteintech@ptglab.com
W: ptglab.com

This product is exclusively available under Proteintech Group brand and is not available to purchase from any other manufacturer.

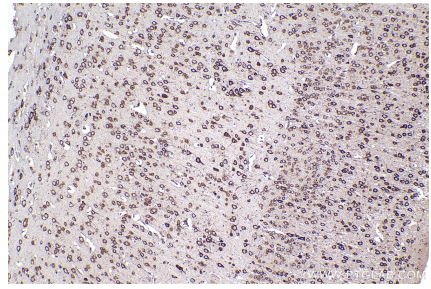
Selected Validation Data



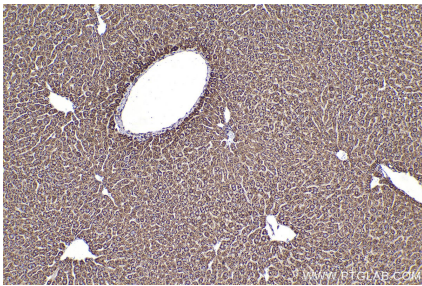
Immunohistochemical analysis of paraffin-embedded human placenta tissue slide using KHC2264 (TRAPA/SSR1 IHC Kit).



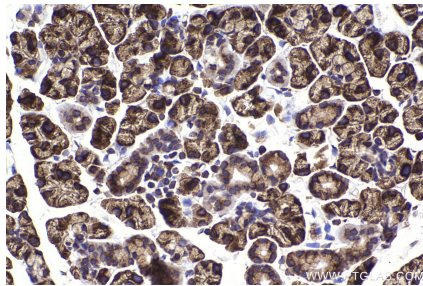
Immunohistochemical analysis of paraffin-embedded human lung cancer tissue slide using KHC2264 (TRAPA/SSR1 IHC Kit).



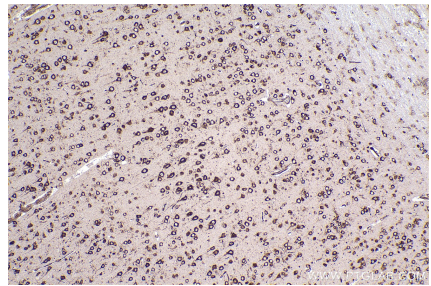
Immunohistochemical analysis of paraffin-embedded mouse brain tissue slide using KHC2264 (TRAPA/SSR1 IHC Kit).



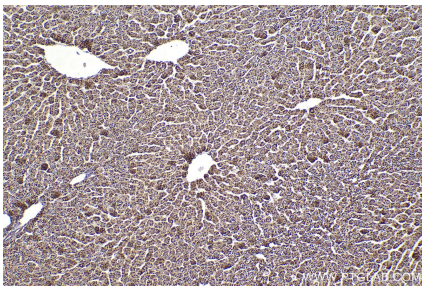
Immunohistochemical analysis of paraffin-embedded mouse liver tissue slide using KHC2264 (TRAPA/SSR1 IHC Kit).



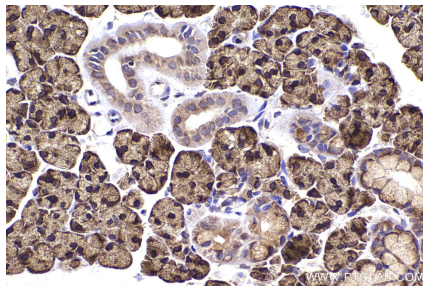
Immunohistochemical analysis of paraffin-embedded mouse salivary gland tissue slide using KHC2264 (TRAPA/SSR1 IHC Kit).



Immunohistochemical analysis of paraffin-embedded rat brain tissue slide using KHC2264 (TRAPA/SSR1 IHC Kit).



Immunohistochemical analysis of paraffin-embedded rat liver tissue slide using KHC2264 (TRAPA/SSR1 IHC Kit).



Immunohistochemical analysis of paraffin-embedded rat salivary gland tissue slide using KHC2264 (TRAPA/SSR1 IHC Kit).