

IHC*easy* ARL2 Ready-To-Use IHC Kit

Catalog Number: **KHC2250**

General Information

Sample type:
FFPE tissue

Cited sample type:

Reactivity:
Human, Mouse, Rat

Cited Reactivity:

Assay type:
Immunohistochemistry

Primary antibody type:
Rabbit Polyclonal

Secondary antibody type:
Polymer-HRP-Goat anti-Rabbit

Kit Component

Component	Size	Concentration
Antigen Retrieval Buffer	100 mL	50×
Washing Buffer	100 mL ×2	20×
Blocking Buffer	5 mL	RTU
Primary Antibody	5 mL	RTU
Secondary Antibody	5 mL	RTU
Chromogen Component A	0.2 mL	RTU
Chromogen Component B	4 mL	RTU
Signal Enhancer	5 mL	RTU
Counter Staining Reagent	5 mL	RTU
Mounting Media	5 mL	RTU
Control Slide	1 slide (Optional)	FFPE
Datasheet	1 Copy	
Manual	1 Copy	

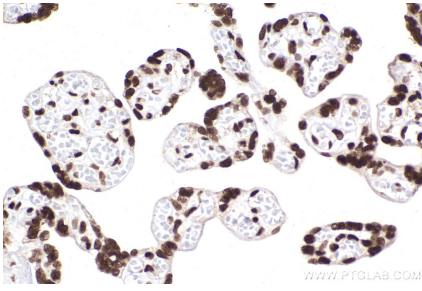
Storage Instructions

All the reagents are stored at 2-8°C. The kit is stable for 6 months from the date of receipt.

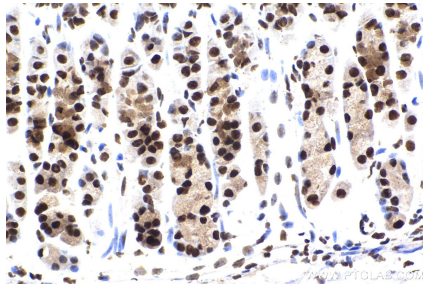
Background

The ADP-ribosylation factor (ARF) genes are small GTP-binding proteins of the RAS superfamily. ADP-ribosylation factor-like 2 (ARL2) is a member of a functionally distinct group of ARF-like genes. ARL2 interacts with the tubulin-specific chaperone protein known as cofactor D. ARL2 downregulates the tubulin GAP activity of cofactor C, D, and E, and inhibits the binding of D to native tubulin.

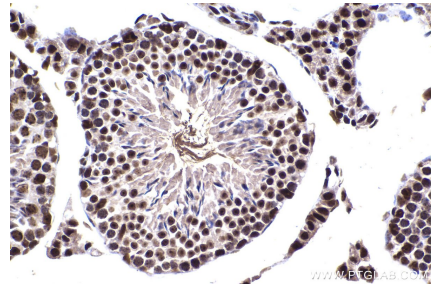
Selected Validation Data



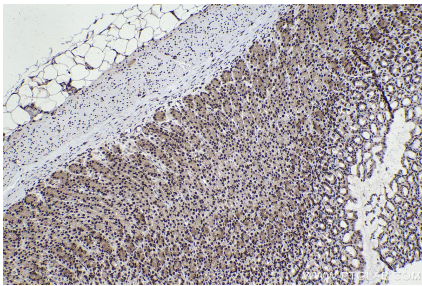
Immunohistochemical analysis of paraffin-embedded human placenta tissue slide using KHC2250 (ARL2 IHC Kit).



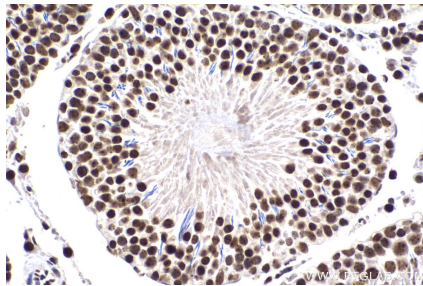
Immunohistochemical analysis of paraffin-embedded mouse stomach tissue slide using KHC2250 (ARL2 IHC Kit).



Immunohistochemical analysis of paraffin-embedded mouse testis tissue slide using KHC2250 (ARL2 IHC Kit).



Immunohistochemical analysis of paraffin-embedded rat stomach tissue slide using KHC2250 (ARL2 IHC Kit).



Immunohistochemical analysis of paraffin-embedded rat testis tissue slide using KHC2250 (ARL2 IHC Kit).