

IHC*easy* UQCRC1 Ready-To-Use IHC Kit

Catalog Number: **KHC2235**

General Information

Sample type:
FFPE tissue

Cited sample type:

Reactivity:
Human, Mouse, Rat

Cited Reactivity:

Assay type:
Immunohistochemistry

Primary antibody type:
Rabbit Polyclonal

Secondary antibody type:
Polymer-HRP-Goat anti-Rabbit

Kit Component

Component	Size	Concentration
Antigen Retrieval Buffer	100 mL	50×
Washing Buffer	100 mL ×2	20×
Blocking Buffer	5 mL	RTU
Primary Antibody	5 mL	RTU
Secondary Antibody	5 mL	RTU
Chromogen Component A	0.2 mL	RTU
Chromogen Component B	4 mL	RTU
Signal Enhancer	5 mL	RTU
Counter Staining Reagent	5 mL	RTU
Mounting Media	5 mL	RTU
Control Slide	1 slide (Optional)	FFPE
Datasheet	1 Copy	
Manual	1 Copy	

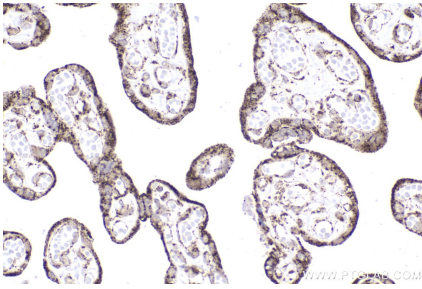
Storage Instructions

All the reagents are stored at 2-8°C. The kit is stable for 6 months from the date of receipt.

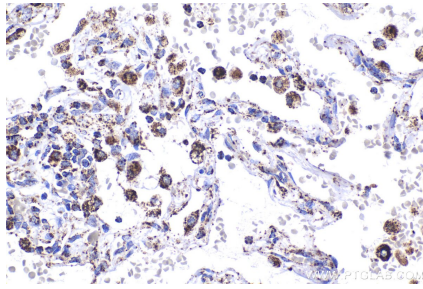
Background

UQCRC1(Cytochrome b-c1 complex subunit 1, mitochondrial), also named as QCR1 and UQCR1, is a subunit of the cytochrome bc1 complex (complex III) of the mitochondrial respiratory chain, may mediate the formation of the complex between cytochromes c and c1. It is associated with apoptosis or inhibition of cancer cell growth.

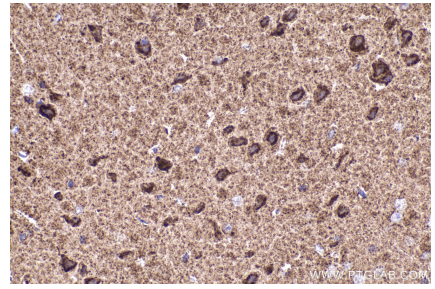
Selected Validation Data



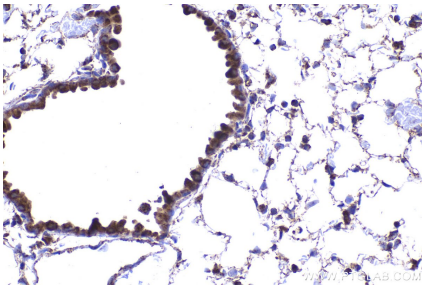
Immunohistochemical analysis of paraffin-embedded human placenta tissue slide using KHC2235 (UQCRC1 IHC Kit).



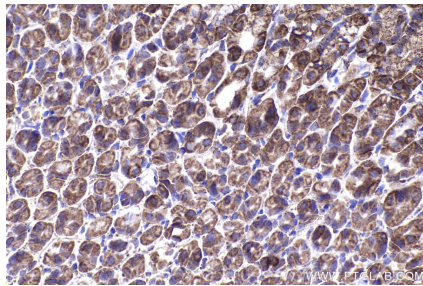
Immunohistochemical analysis of paraffin-embedded human lung tissue slide using KHC2235 (UQCRC1 IHC Kit).



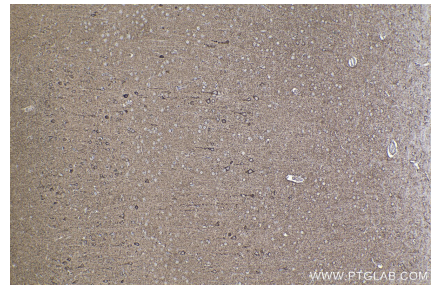
Immunohistochemical analysis of paraffin-embedded mouse brain tissue slide using KHC2235 (UQCRC1 IHC Kit).



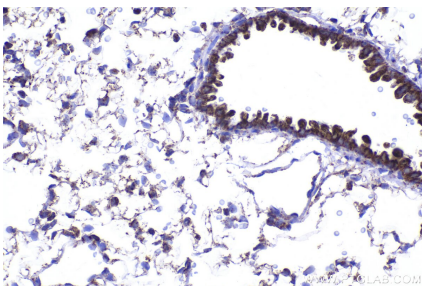
Immunohistochemical analysis of paraffin-embedded mouse lung tissue slide using KHC2235 (UQCRC1 IHC Kit).



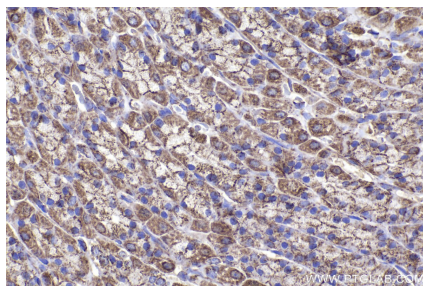
Immunohistochemical analysis of paraffin-embedded mouse stomach tissue slide using KHC2235 (UQCRC1 IHC Kit).



Immunohistochemical analysis of paraffin-embedded rat brain tissue slide using KHC2235 (UQCRC1 IHC Kit).



Immunohistochemical analysis of paraffin-embedded rat lung tissue slide using KHC2235 (UQCRC1 IHC Kit).



Immunohistochemical analysis of paraffin-embedded rat stomach tissue slide using KHC2235 (UQCRC1 IHC Kit).